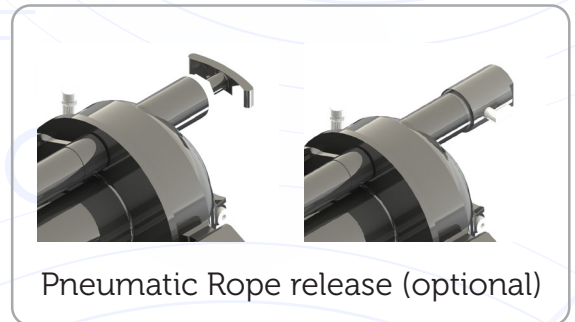
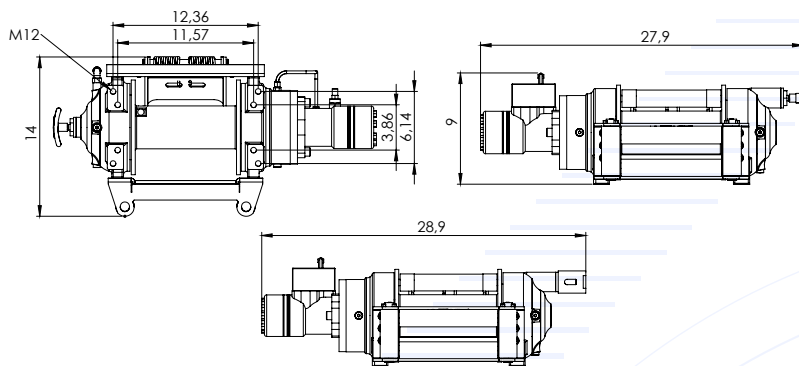
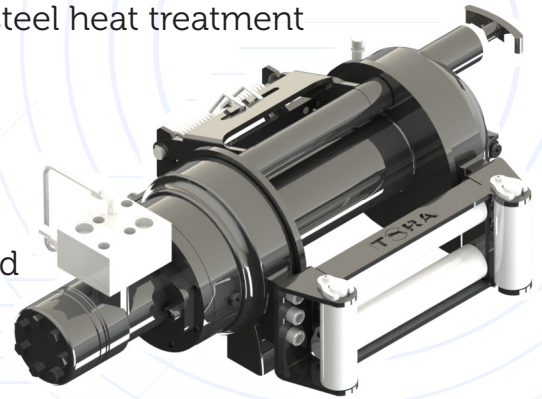


- ▶ High-strength, long-lasting steel body
- ▶ Extra reinforced planetary gear system with special steel heat treatment
- ▶ Lightweight and powerful design
- ▶ 100% negative effective hydraulic disc brake system
- ▶ Standard winch guide system and rope stabiliser
- ▶ Manual winch discharge system provided as standard
- ▶ High torque hydromotor



Rope Winding Count	Pulling Capacity lbs	Winding Speed m-min/(ft-min)	Rope Length m/ft
1	12000	11,3/37	5,8/19
2	9920	12,7/41	12,3/40
3	8510	14,2/46	19,3/63
4	7360	15,5/50	27,1/88
5	6494	17/55	35,5/116

Maximum Pulling Force (kg/lbs)	: 12000 lbs
Maximum Rope Diameter (mm/in)	: 12mm (1/2")
Maximum Rope Length (m/ft)	: 35.5 m (116 ft)
Hydromotor (cc/in <sup>3</sup> )	: 315 cc (19.2 in <sup>3</sup> )
Maximum Pump Flow (L/min-gal/min)	: 60L (15.8 gal)
Gear Ratio	: 5/1
Maximum Operating Pressure (bar/psi)	: 130 bar (1885 psi)
Recommended Gear Oil Product	: 80w 90 - 0.70L (23.6 fl oz)
Weight	: 65 kg (143 lbs)