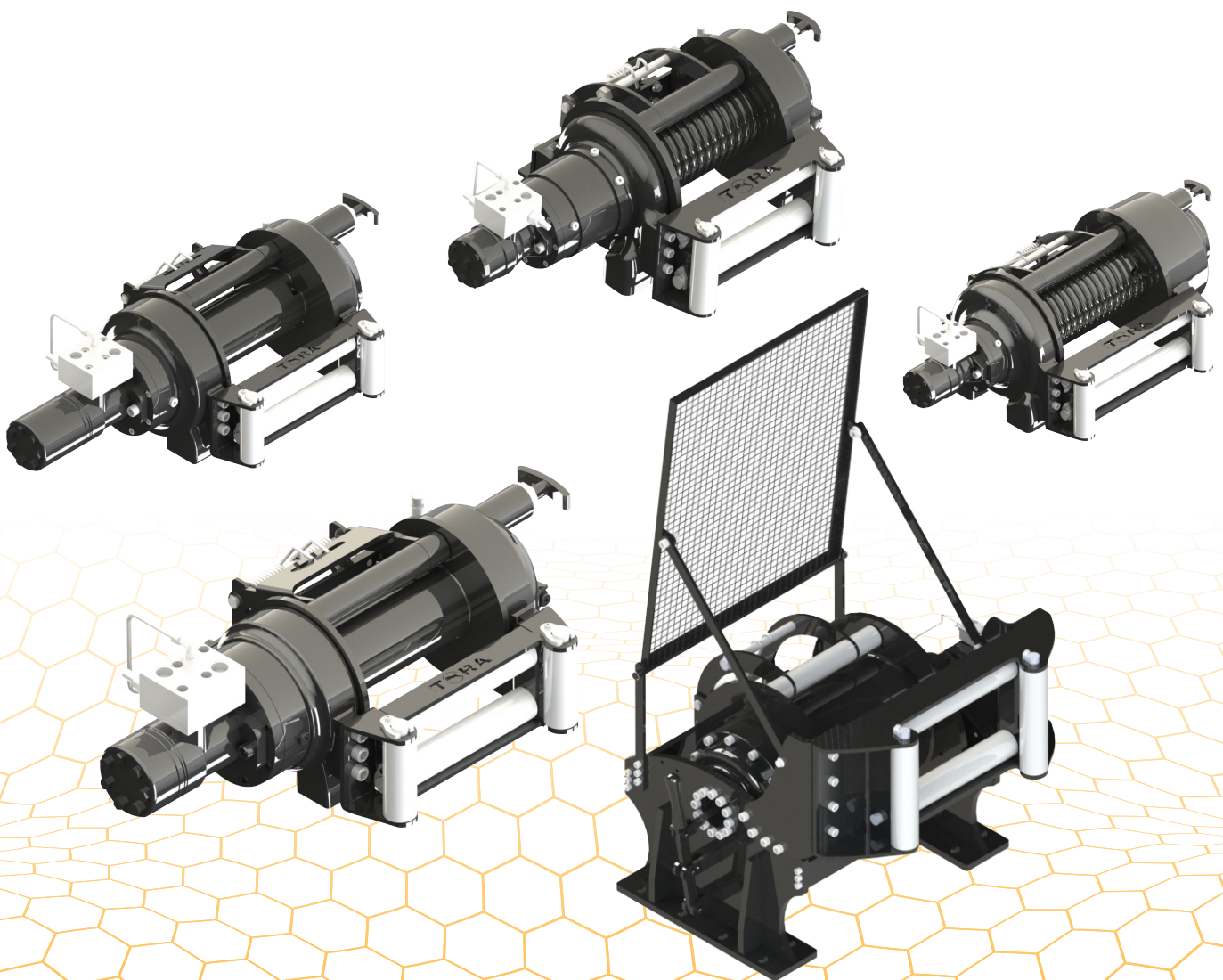


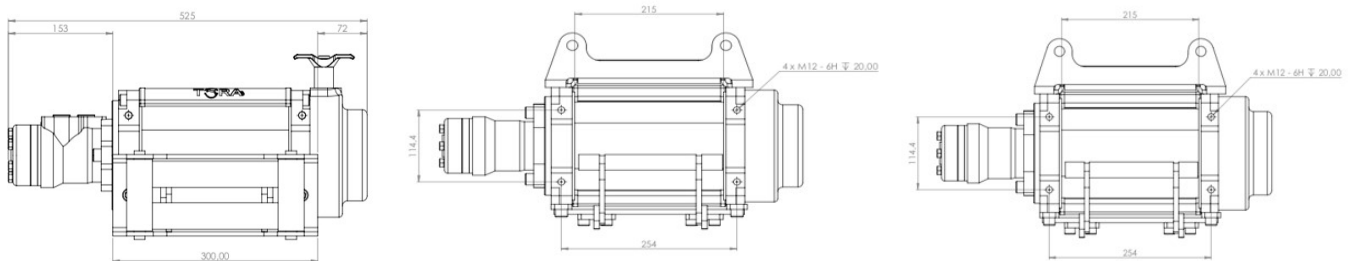
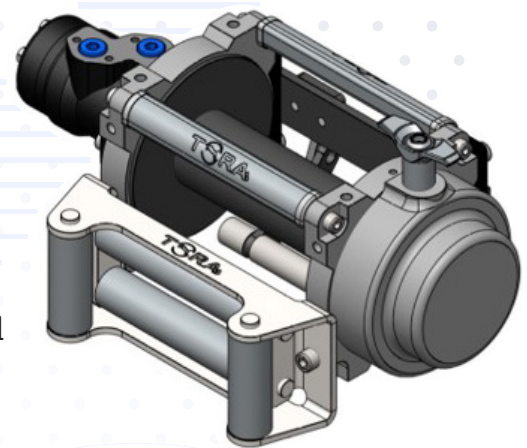


LIGHT, MEDIUM, HEAVY DUTY SERIES
HYDRAULIC WINCH
CATALOGUE



www.toracompany.com

- ▶ High-strength, long-lasting steel body
- ▶ Extra reinforced planetary gear system with special steel heat treatment
- ▶ Lightweight and powerful design
- ▶ Standard winch guide system and rope stabiliser
- ▶ Manual winch discharge system provided as standard
- ▶ High torque hydromotor



Rope Winding Count	Pulling Capacity lbs	Winding Speed m-min/(ft-min)	Rope Length m/ft
1	10000	5,3/17,3	5/16,4
2	8012	4,6/15	11,3/37
3	6683	2,7/8,9	18,6/61
4	5732	1,4/4,6	25,5/83,6

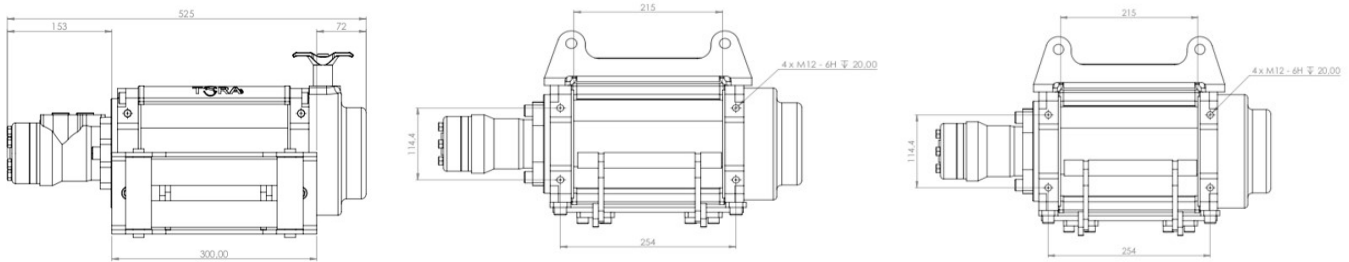
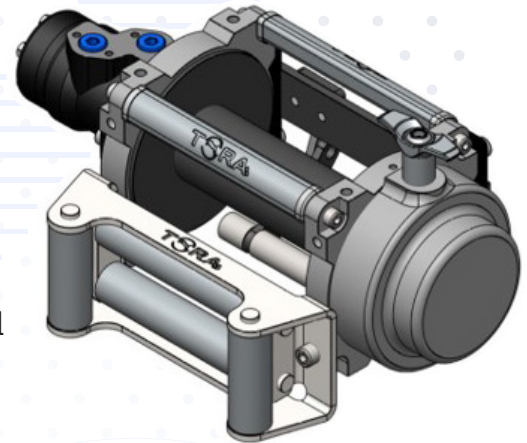
Technical Specifications

Pulling Rate	: 10000 lbs (4535 kg)	Rope	: 25 m x Ø 10mm
Motor Displacemet	: 50 ml/r	Fairlead	: 4-ways rollers
Oil Flow	: 5 ~ 45 L/min	Net Weight	: 65 kg
Pressure	: 11,5 Mpa	Mounting Bolt Pattern	: 254mm x 114,3mm
Gear	: 2-stage planetary	Dimensions	: (L x W x H) 519mm x 226mm x 262mm
Gear Ratio	: 26-:-1		

Line Speed and Motor Current (First Layer)

Line Pull	Lbs	0	5732	6683	8012	10000
	Kgs	0	2600	3031	3634	4536
Line Speed	m/min	0,7	1,4	2,7	4,6	5,3
Pressure	PSI	290,1	453.1	986.2	1493.9	1668
Oil Flow	l/min	5	10	20	35	40

- ▶ High-strength, long-lasting steel body
- ▶ Extra reinforced planetary gear system with special steel heat treatment
- ▶ Lightweight and powerful design
- ▶ Standard winch guide system and rope stabiliser
- ▶ Manual winch discharge system provided as standard
- ▶ High torque hydromotor



Rope Winding Count	Pulling Capacity lbs	Winding Speed m-min/(ft-min)	Rope Length m/ft
1	12000	5,3/17,3	5/16,4
2	10595	4,6/15	11,3/37
3	9485	2,7/8,9	18,6/61
4	7904	1,4/4,6	25,5/83,6

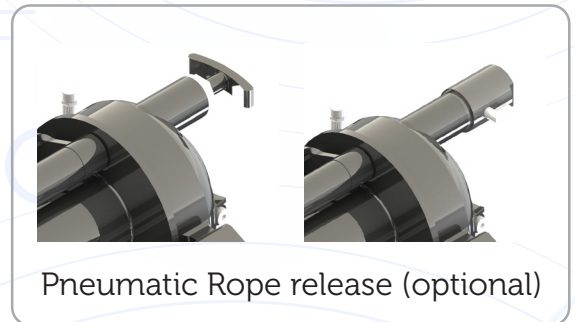
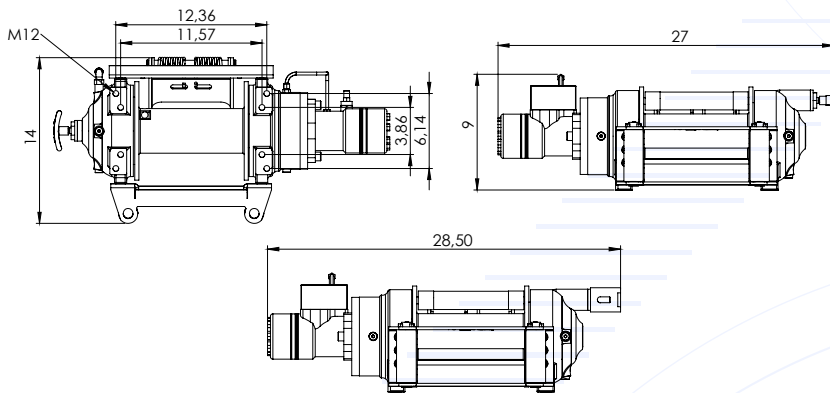
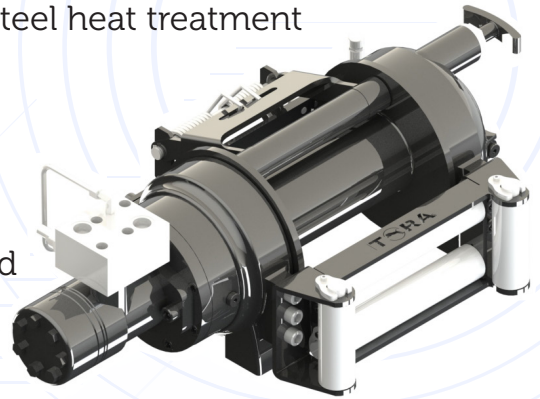
Technical Specifications

Pulling Rate	: 12000 lbs (5443 kg)	Rope	: 25 m x Ø 12mm
Motor Displacemet	: 65 ml/r	Fairlead	: 4-ways rollers
Oil Flow	: 5 ~ 45 L/min	Net Weight	: 65 kg
Pressure	: 14 Mpa	Mounting Bolt Pattern	: 254mm x 114,3mm
Gear	: 2-stage planetary	Dimensions	: (L x W x H) 519mm x 226mm x 262mm
Gear Ratio	: 26-:-1		

Line Speed and Motor Current (First Layer)

Line Pull	Lbs	0	7904	9485	10595	12000
	Kgs	0	3585	4302	4806	5443
Line Speed	m/min	0,7	1,4	2,7	4,6	5,3
Pressure	PSI	290,1	453.1	986.2	1668	2030,6
Oil Flow	l/min	5	10	20	35	40

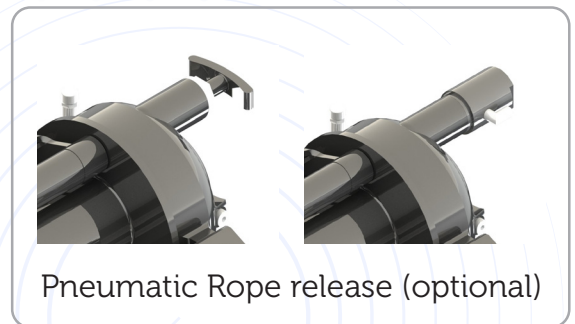
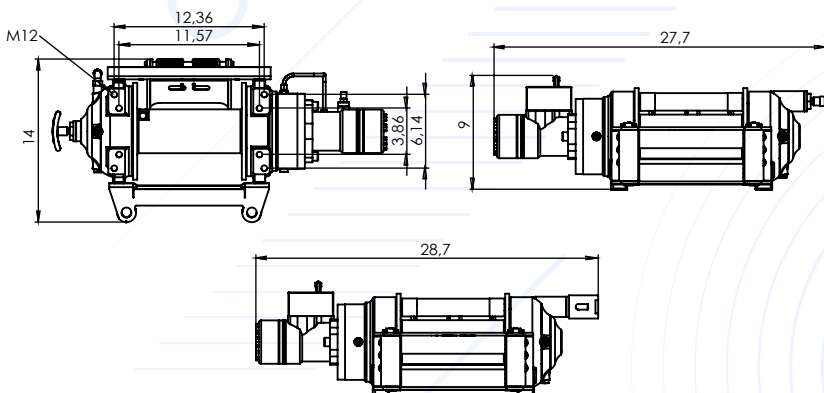
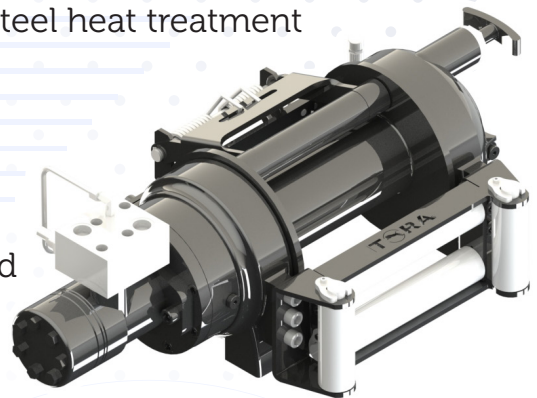
- ▶ High-strength, long-lasting steel body
- ▶ Extra reinforced planetary gear system with special steel heat treatment
- ▶ Lightweight and powerful design
- ▶ 100% negative effective hydraulic disc brake system
- ▶ Standard winch guide system and rope stabiliser
- ▶ Manual winch discharge system provided as standard
- ▶ High torque hydromotor



Rope Winding Count	Pulling Capacity lbs	Winding Speed m-min/(ft-min)	Rope Length m/ft
1	8000	17,9/58	6,85/22
2	6700	19,8/64	14,4/47
3	5776	21,7/71	22,6/74
4	5070	23,6/77	31,5/103
5	4523	25,5/83	41/134

Maximum Pulling Force (kg/lbs)	: 8000 lbs
Maximum Rope Diameter (mm/in)	: 10mm (3/8")
Maximum Rope Length (m/ft)	: 41 m (134 ft)
Hydromotor (cc/in ³)	: 200 cc (12 in ³)
Maximum Pump Flow (L/min-g/min)	: 60L (15.8 gal)
Gear Ratio	: 5/1
Maximum Operating Pressure (bar/psi)	: 120 bar (1740 psi)
Recommended Gear Oil Product	: 80w 90 - 0.70L (23.6 fl oz)
Weight	: 63 kg (138 lbs)

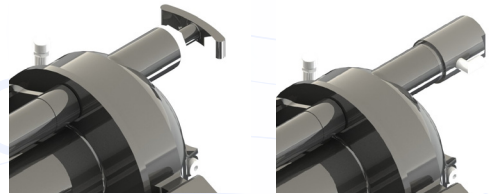
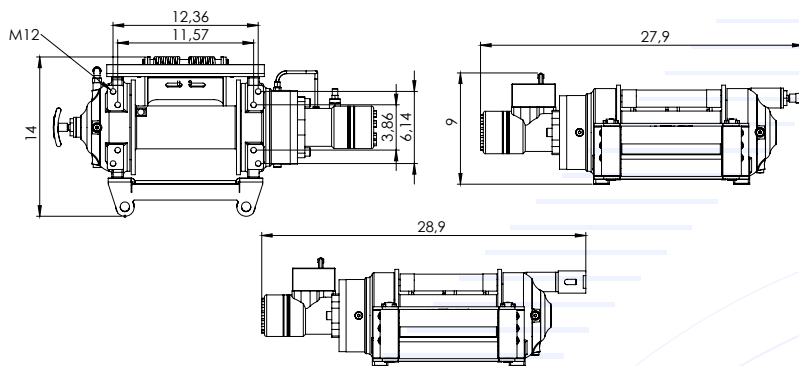
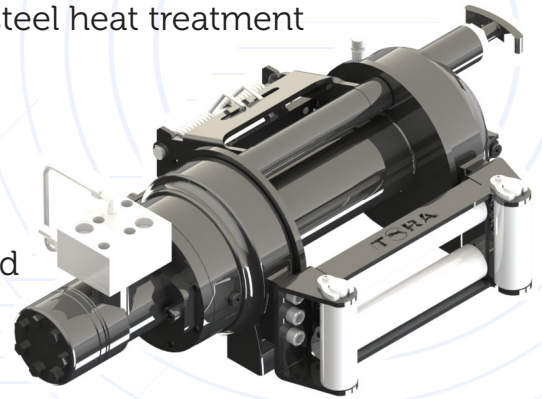
- ▶ High-strength, long-lasting steel body
- ▶ Extra reinforced planetary gear system with special steel heat treatment
- ▶ Lightweight and powerful design
- ▶ 100% negative effective hydraulic disc brake system
- ▶ Standard winch guide system and rope stabiliser
- ▶ Manual winch discharge system provided as standard
- ▶ High torque hydromotor



Rope Winding Count	Pulling Capacity lbs	Winding Speed m-min/(ft-min)	Rope Length m/ft
1	10000	14,5/47	6,85/22
2	8370	15,9/52	14,4/47
3	7215	17,4/57	22,6/74
4	6342	18,9/62	31,5/103
5	5657	20,4/66	41/134

Maximum Pulling Force (kg/lbs)	: 10000 lbs
Maximum Rope Diameter (mm/in)	: 10mm (3/8")
Maximum Rope Length (m/ft)	: 41 m (134 ft)
Hydromotor (cc/in ³)	: 250 cc (15 in ³)
Maximum Pump Flow (L/min-g/min)	: 60L (15.8 gal)
Gear Ratio	: 5/1
Maximum Operating Pressure (bar/psi)	: 140 bar (2030 psi)
Recommended Gear Oil Product	: 80w 90 - 0.70L (23.6 fl oz)
Weight	: 64 kg (141 lbs)

- ▶ High-strength, long-lasting steel body
- ▶ Extra reinforced planetary gear system with special steel heat treatment
- ▶ Lightweight and powerful design
- ▶ 100% negative effective hydraulic disc brake system
- ▶ Standard winch guide system and rope stabiliser
- ▶ Manual winch discharge system provided as standard
- ▶ High torque hydromotor

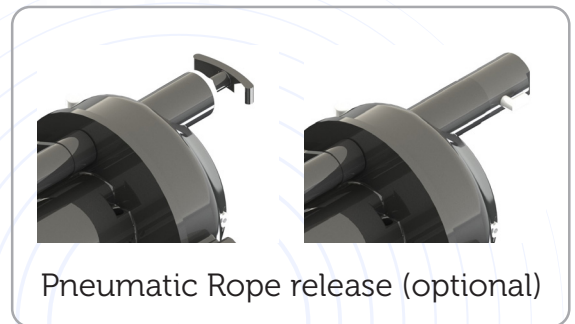
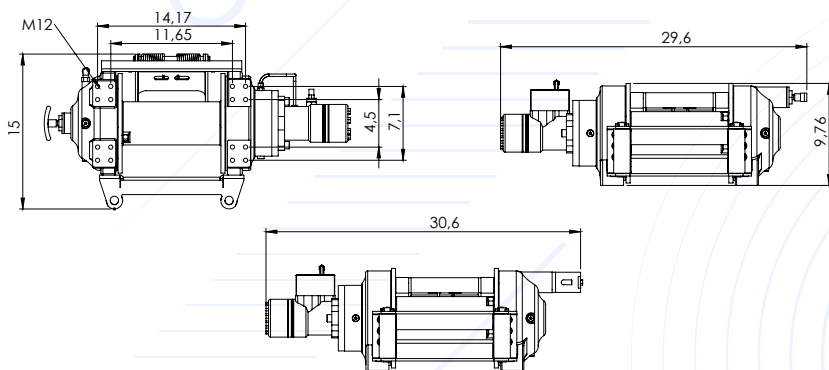
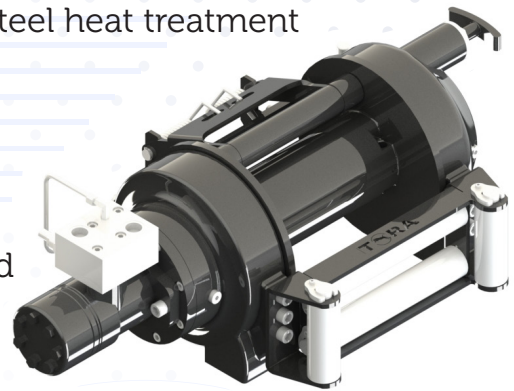


Pneumatic Rope release (optional)

Rope Winding Count	Pulling Capacity lbs	Winding Speed m-min/(ft-min)	Rope Length m/ft
1	12000	11,3/37	5,8/19
2	9920	12,7/41	12,3/40
3	8510	14,2/46	19,3/63
4	7360	15,5/50	27,1/88
5	6494	17/55	35,5/116

Maximum Pulling Force (kg/lbs)	: 12000 lbs
Maximum Rope Diameter (mm/in)	: 12mm (1/2")
Maximum Rope Length (m/ft)	: 35.5 m (116 ft)
Hydromotor (cc/in ³)	: 315 cc (19.2 in ³)
Maximum Pump Flow (L/min-gal/min)	: 60L (15.8 gal)
Gear Ratio	: 5/1
Maximum Operating Pressure (bar/psi)	: 130 bar (1885 psi)
Recommended Gear Oil Product	: 80w 90 - 0.70L (23.6 fl oz)
Weight	: 65 kg (143 lbs)

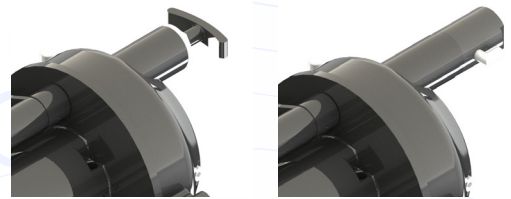
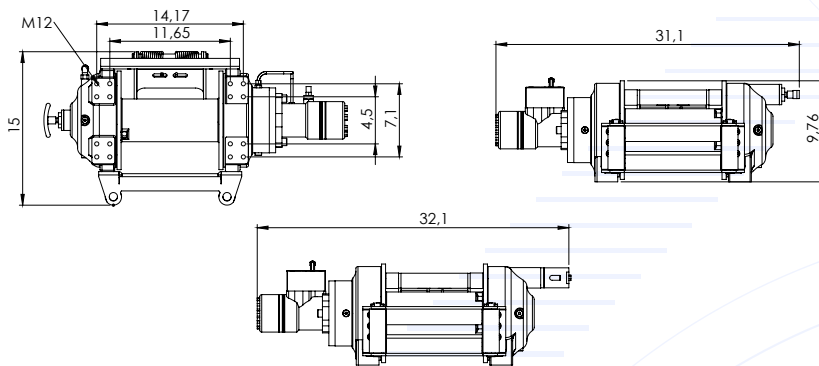
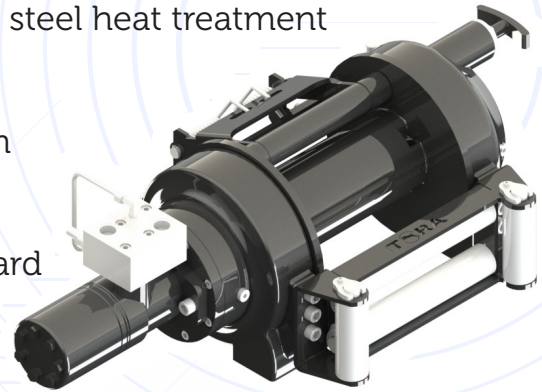
- ▶ High-strength, long-lasting steel body
- ▶ Extra reinforced planetary gear system with special steel heat treatment
- ▶ Lightweight and powerful design
- ▶ 100% negative effective hydraulic disc brake system
- ▶ Standard winch guide system and rope stabiliser
- ▶ Manual winch discharge system provided as standard
- ▶ High torque hydromotor



Rope Winding Count	Pulling Capacity lbs	Winding Speed m-min/(ft-min)	Rope Length m/ft
1	15000	10,4/34	7/22
2	12425	11,6/38	14,7/48
3	10,617	12,8/41	23,1/75
4	9268	14/45	32,4/106
5	8223	15,2/49	42,4/139
6	7392	16,4/53	53/173

Maximum Pulling Force (kg/lbs)	: 15000 lbs
Maximum Rope Diameter (mm/in)	: 12mm (1/2")
Maximum Rope Length (m/ft)	: 53 m (173 ft)
Hydromotor (cc/in ³)	: 315 cc (19 in ³)
Maximum Pump Flow (L/min-gal)	: 60L (15.8 gal)
Gear Ratio	: 6/1
Maximum Operating Pressure (bar/psi)	: 155 bar (2248 psi)
Recommended Gear Oil Product	: 80w 90 - 0.80L (27 fl oz)
Weight	: 82 kg (180 lbs)

- ▶ High-strength, long-lasting steel body
- ▶ Extra reinforced planetary gear system with special steel heat treatment
- ▶ Lightweight and powerful design
- ▶ 100% negative effective hydraulic disc brake system
- ▶ Standard winch guide system and rope stabiliser
- ▶ Manual winch discharge system provided as standard
- ▶ High torque hydromotor

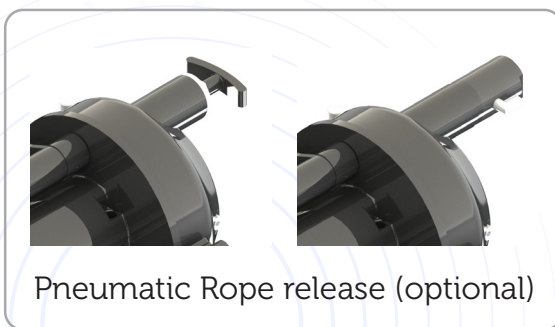
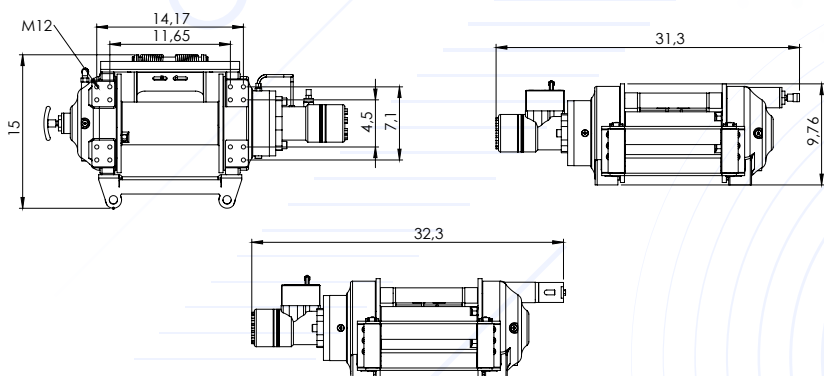
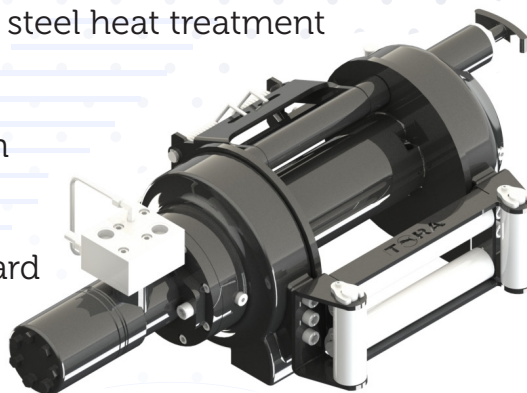


Pneumatic Rope release (optional)

Rope Winding Count	Pulling Capacity lbs	Winding Speed m-min/(ft-min)	Rope Length m/ft
1	16000	10,4/34	6/19
2	12967	11,8/38	12,8/41
3	10893	13,2/43	20,4/66
4	9389	14,6/47	28,7/94
5	8251	15,9/52	40/131

Maximum Pulling Force (kg/lbs)	: 16000 lbs
Maximum Rope Diameter (mm/in)	: 14mm (3/9")
Maximum Rope Length (m/ft)	: 40 m (131 ft)
Hydromotor (cc/in ³)	: 315 cc (19 in ³)
Maximum Pump Flow (L/min-gal min)	: 60L (15.8 gal)
Gear Ratio	: 6/1
Maximum Operating Pressure (bar/psi)	: 165 bar (2393 psi)
Recommended Gear Oil Product	: 80w 90 - 0.80L (27 fl oz)
Weight	: 84 kg (185 lbs)

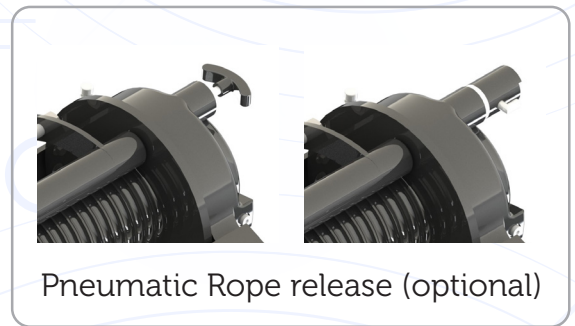
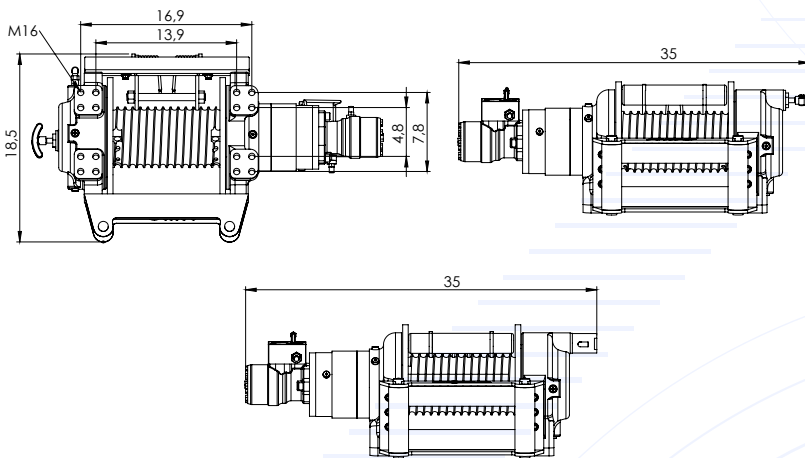
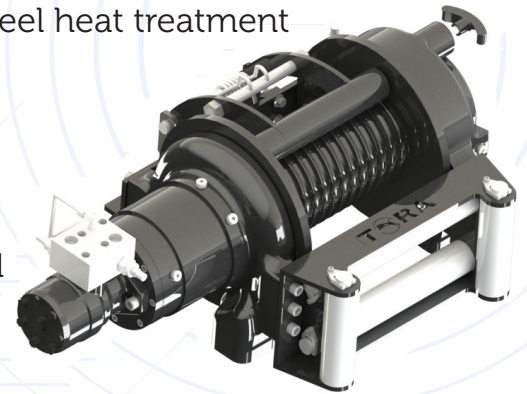
- ▶ High-strength, long-lasting steel body
- ▶ Extra reinforced planetary gear system with special steel heat treatment
- ▶ Lightweight and powerful design
- ▶ 100% negative effective hydraulic disc brake system
- ▶ Standard winch guide system and rope stabiliser
- ▶ Manual winch discharge system provided as standard
- ▶ High torque hydromotor



Rope Winding Count	Pulling Capacity lbs	Winding Speed m-min/(ft-min)	Rope Length m/ft
1	18000	8,4/27	6/19
2	14645	9,5/31	12,8/41
3	12301	10,7/35	20,4/66
4	10604	11,7/38	28,7/94
5	9318	12,8/41	40/131

Maximum Pulling Force (kg/lbs)	: 18000 lbs
Maximum Rope Diameter (mm/in)	: 14mm (3/9'')
Maximum Rope Length (m/ft)	: 40 m (131 ft)
Hydromotor (cc/in ³)	: 400 cc (24 in ³)
Maximum Pump Flow (L/min-g min)	: 60L (15.8 gal)
Gear Ratio	: 6/1
Maximum Operating Pressure (bar/psi)	: 150 bar (2175 psi)
Recommended Gear Oil Product	: 80w 90 - 0.80L (27 fl oz)
Weight	: 85 kg (187 lbs)

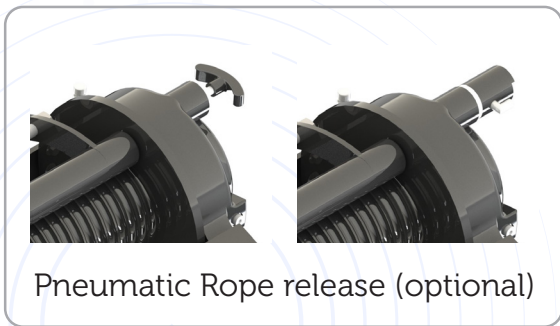
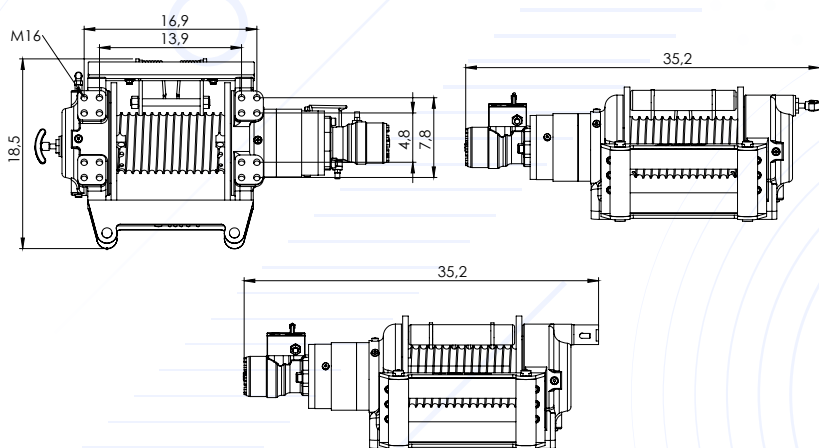
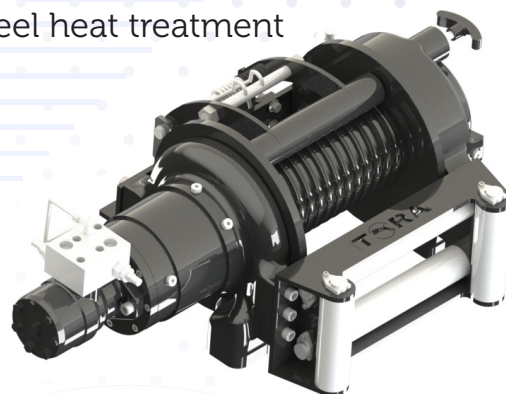
- ▶ High-strength, long-lasting steel body
- ▶ Extra reinforced planetary gear system with special steel heat treatment
- ▶ Lightweight and powerful design
- ▶ 100% negative effective hydraulic disc brake system
- ▶ Standard winch guide system and rope stabiliser
- ▶ Manual winch discharge system provided as standard
- ▶ High torque hydromotor



Rope Winding Count	Pulling Capacity lbs	Winding Speed m-min/(ft-min)	Rope Length m/ft
1	22000	7,8/25	5,9/19
2	18346	8,7/28	13,3/43
3	15628	9,6/31	22,1/72
4	13611	10,5/34	32,3/105
5	12054	11,4/37	43/141

Maximum Pulling Force (kg/lbs)	: 22000 lbs
Maximum Rope Diameter (mm/in)	: 16mm (7/11")
Maximum Rope Length (m/ft)	: 43 m (141 ft)
Hydromotor (cc/in ³)	: 160 cc (10 in ³)
Maximum Pump Flow (L/min-g min)	: 60L (15.8 gal)
Gear Ratio	: 21/1
Maximum Operating Pressure (bar/psi)	: 168 bar (2346 psi)
Recommended Gear Oil Product	: 80w 90 - 1L (33.8 fl oz)
Weight	: 150 kg (330 lbs)

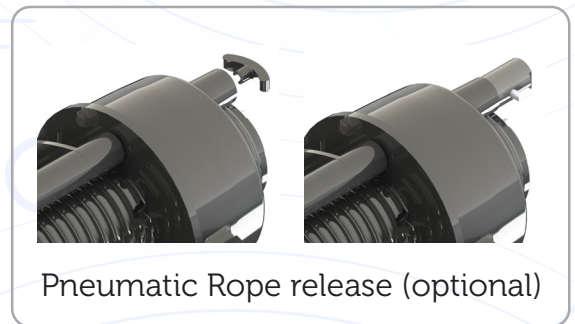
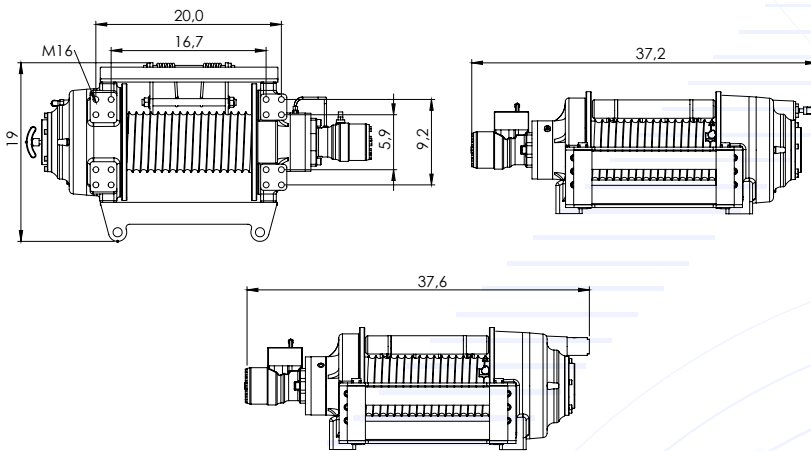
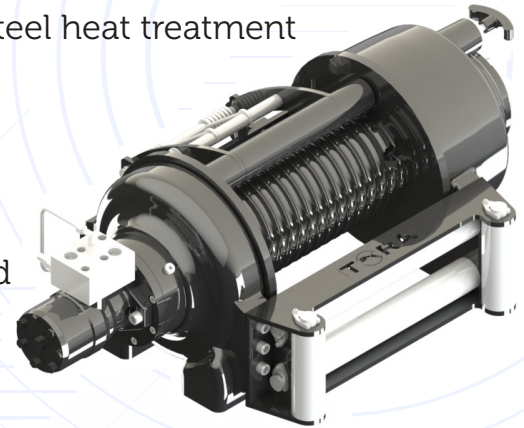
- ▶ High-strength, long-lasting steel body
- ▶ Extra reinforced planetary gear system with special steel heat treatment
- ▶ Lightweight and powerful design
- ▶ 100% negative effective hydraulic disc brake system
- ▶ Standard winch guide system and rope stabiliser
- ▶ Manual winch discharge system provided as standard
- ▶ High torque hydromotor



Rope Winding Count	Pulling Capacity lbs	Winding Speed m-min/(ft-min)	Rope Length m/ft
1	26500	6,2/20	5,9/19
2	21841	7/22	13,3/43
3	18607	7,7/25	22,1/72
4	16203	8,4/27	32,3/105
5	14352	9,2/30	43/141

Maximum Pulling Force (kg/lbs)	: 26500 lbs
Maximum Rope Diameter (mm/in)	: 16mm (7/11")
Maximum Rope Length (m/ft)	: 43 m (141 ft)
Hydromotor (cc/in ³)	: 200 cc (12 in ³)
Maximum Pump Flow (L/min-gal)	: 60L (15.8 gal)
Gear Ratio	: 21/1
Maximum Operating Pressure (bar/psi)	: 160 bar (2320 psi)
Recommended Gear Oil Product	: 80w 90 - 1L (33.8 fl oz)
Weight	: 155 kg (341 lbs)

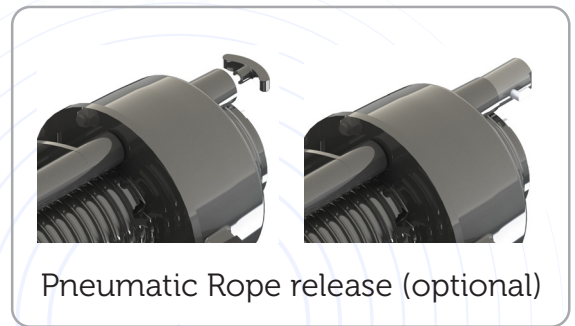
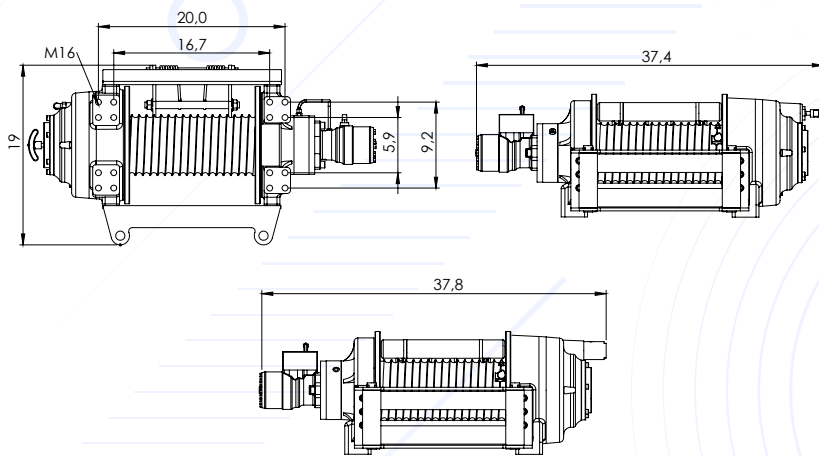
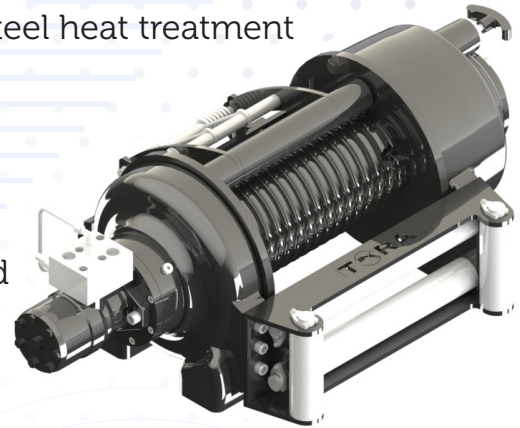
- ▶ High-strength, long-lasting steel body
- ▶ Extra reinforced planetary gear system with special steel heat treatment
- ▶ Lightweight and powerful design
- ▶ 100% negative effective hydraulic disc brake system
- ▶ Standard winch guide system and rope stabiliser
- ▶ Manual winch discharge system provided as standard
- ▶ High torque hydromotor



Rope Winding Count	Pulling Capacity lbs	Winding Speed m-min/(ft-min)	Rope Length m/ft
1	33000	5/16	7,5/24
2	27844	5,6/18	17/55
3	23682	6,2/20	28/91
4	20593	6,8/22	42/137

Maximum Pulling Force (kg/lbs)	: 33000 lbs
Maximum Rope Diameter (mm/in)	: 18mm (8/11")
Maximum Rope Length (m/ft)	: 42 m (137 ft)
Hydromotor (cc/in ³)	: 160 cc (10 in ³)
Maximum Pump Flow (L/min-gal)	: 60L (15.8 gal)
Gear Ratio	: 36/1
Maximum Operating Pressure (bar/psi)	: 165 bar (2393 psi)
Recommended Gear Oil Product	: 80w 90 - 2L (67.6 fl oz)
Weight	: 195 kg (429 lbs)

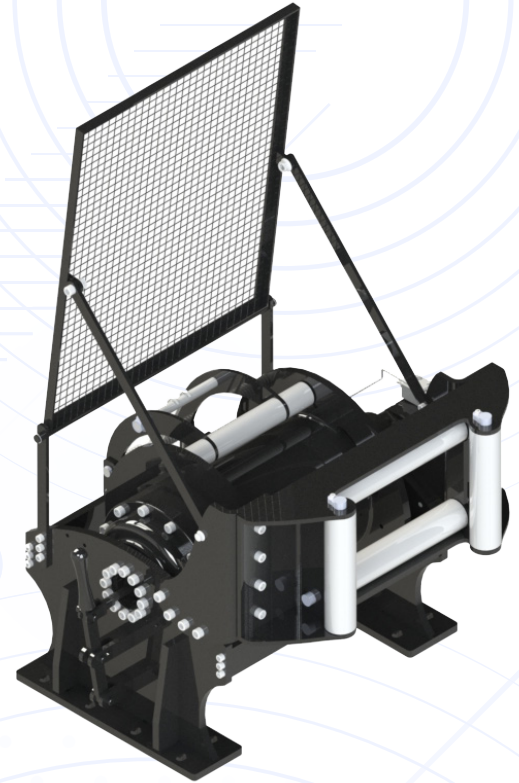
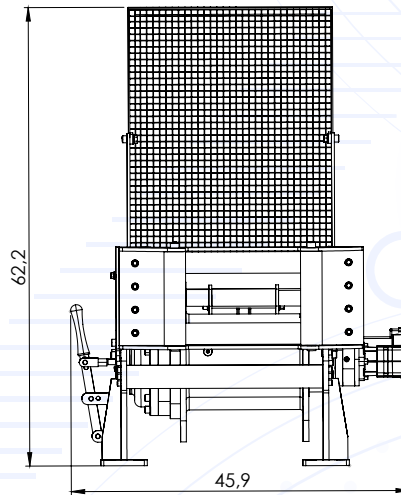
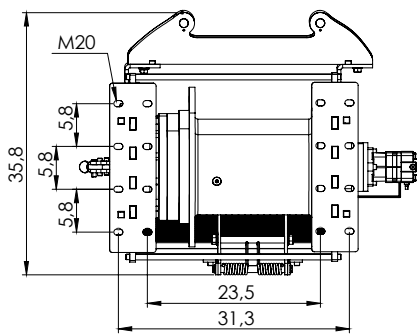
- ▶ High-strength, long-lasting steel body
- ▶ Extra reinforced planetary gear system with special steel heat treatment
- ▶ Lightweight and powerful design
- ▶ 100% negative effective hydraulic disc brake system
- ▶ Standard winch guide system and rope stabiliser
- ▶ Manual winch discharge system provided as standard
- ▶ High torque hydromotor



Rope Winding Count	Pulling Capacity lbs	Winding Speed m-min/(ft-min)	Rope Length m/ft
1	40000	4,3/14	7,5/24
2	32716	4,8/15	17/55
3	27809	5,3/17	28/91
4	14180	5,8/19	42/137

Maximum Pulling Force (kg/lbs)	: 40000 lbs
Maximum Rope Diameter (mm/in)	: 18mm (8/11")
Maximum Rope Length (m/ft)	: 42 m (137 ft)
Hydromotor (cc/in ³)	: 200 cc (12 in ³)
Maximum Pump Flow (L/min-gal)	: 60L (15.8 gal)
Gear Ratio	: 36/1
Maximum Operating Pressure (bar/psi)	: 165 bar (2393 psi)
Recommended Gear Oil Product	: 80w 90 - 2L (67.6 fl oz)
Weight	: 200 kg (441 lbs)

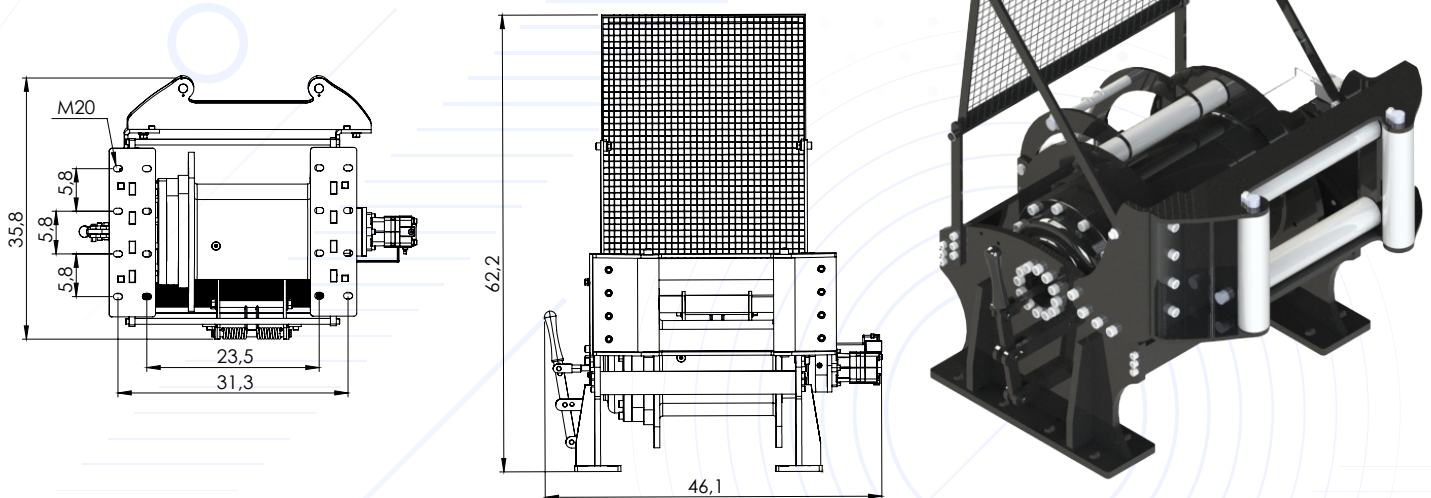
- ▶ High-strength, long-lasting steel body
- ▶ Extra reinforced planetary gear system with special steel heat treatment
- ▶ Lightweight and powerful design
- ▶ 100% negative effective hydraulic disc brake system
- ▶ Standard winch guide system and rope stabiliser
- ▶ Manual winch discharge system provided as standard
- ▶ High torque hydromotor



Rope Winding Count	Pulling Capacity lbs	Winding Speed m-min/(ft-min)	Rope Length m/ft
1	66000	3,5/11	16,6/54
2	58047	3,9/12	34,5/113
3	51482	4,5/14	53,5/175
4	45252	5/16	74/242

Maximum Pulling Force (kg/lbs)	: 66000 lbs
Maximum Rope Diameter (mm/in)	: 26mm (1")
Maximum Rope Length (m/ft)	: 74 m (242 ft)
Hydromotor (cc/in ³)	: 160 cc (9,6 in ³)
Maximum Pump Flow (L/min-g min)	: 75L (19.8 gal)
Gear Ratio	: 150/1
Maximum Operating Pressure (bar/psi)	: 165 bar (2393 psi)
Recommended Gear Oil Product	: 80w 90 - 4L (135.2 fl oz)
Weight	: 485 kg (1069 lbs)

- ▶ High-strength, long-lasting steel body
- ▶ Extra reinforced planetary gear system with special steel heat treatment
- ▶ Lightweight and powerful design
- ▶ 100% negative effective hydraulic disc brake system
- ▶ Standard winch guide system and rope stabiliser
- ▶ Manual winch discharge system provided as standard
- ▶ High torque hydromotor



Rope Winding Count	Pulling Capacity lbs	Winding Speed m-min/(ft-min)	Rope Length m/ft
1	77000	2,6/8	15,5/50
2	67170	2,9/9	32,1/105
3	59167	3,1/10	50,2/166
4	52869	3,4/11	70/229

Maximum Pulling Force (kg/lbs)	: 77000 lbs
Maximum Rope Diameter (mm/in)	: 28mm (10,9")
Maximum Rope Length (m/ft)	: 70 m (229 ft)
Hydromotor (cc/in ³)	: 200 cc (12 in ³)
Maximum Pump Flow (L/min-g min)	: 75L (19.8 gal)
Gear Ratio	: 150/1
Maximum Operating Pressure (bar/psi)	: 155 bar (2248 psi)
Recommended Gear Oil Product	: 80w 90 - 4L (135.2 fl oz)
Weight	: 490 kg (1080 lbs)

TORA LLC



📍 11417 IL 19, Franklin Park, IL 60131
☎️ (630) 785-2410
📞 (331) 688-4947
🌐 www.toracompany.com
✉️ info@toracompany.com



[toracompany](https://www.facebook.com/toracompany)



[tora.company](https://www.instagram.com/tora.company)



www.toracompany.com