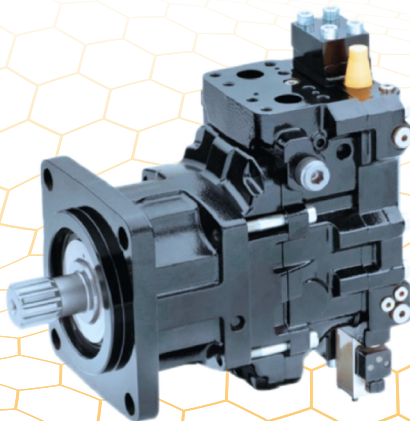




HYDRAULIC EQUIPMENTS



PLATFORM ▶

These are the Power Packs which are used in Automotive sector to lift the cars. It runs with electric motor either with 220V or 380V.

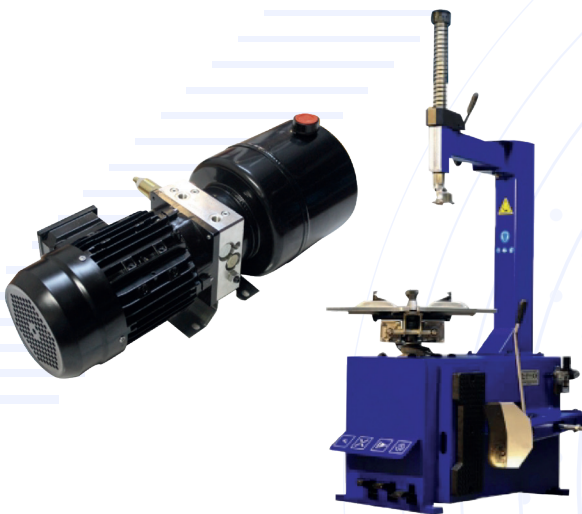
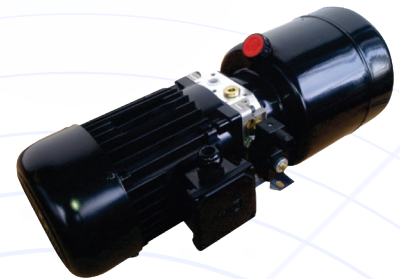
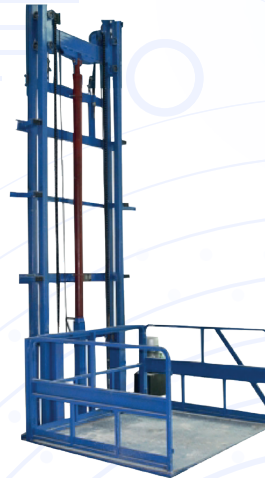


▶ **LOADING RAMP**

These are the Power Packs which are used in warehouses to load the cars inside the trucks. It runs with electric motor either with 220V or 380V.

FREIGHT LIFT ▶

These are the Power Packs which are used in carrying heavy weight elevators. It runs with electric motor either with 220V or 380V.



▶ **TYRE CHANGING MACHINES**

Tyre changing is a tough job, but with these Power Packs it is not! It runs with electric motor either with 220V or 380V.

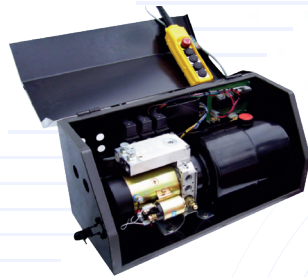
CHAINSAW MACHINES ▶

These are the Power Packs which are used in mobile and stationary Chainsaw Machines. It runs with electric motor either with 220V or 380V.



TOW TRUCKS ▶

These are the Power Packs which are used in Tow Trucks in order to pull the cars on the truck. It runs with electric motor either with 12V or 24V.

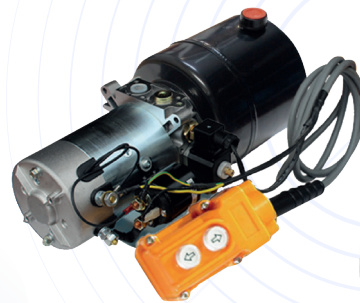


◀ **REAR LIFT OF THE TRUCKS**

These are the Power Packs which are used at rear of the truck to run the external lifts or covers. It runs with electric motor either with 12V or 24V.

DUMP TRUCKS ▶

These are the Power Packs which are used on the trucks which don't have any PTO output. It runs with electric motor either with 12V or 24V.

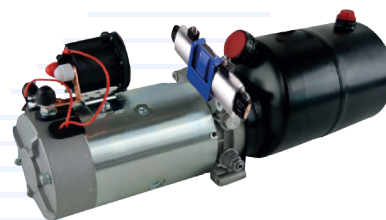


◀ **FORK-LIFTS**

These are the Power Packs which are used on the Fork-Lifts in order to make a safe storage. It runs with electric motor either with 12V or 24V.

LOWBED RAMPS ▶

These are the Power Packs which are used on Lowbed ramp (trucks). It runs with electric motor either with 12V or 24V.



1TR Group Standard Pumps

Type	Displacement (CC/RPM)	Working Pressure (BAR)		Max. RPM (RPM/Min)
		Continuous	Peak	
1TR.040	4,00	250	300	4000
1TR.060	6,00	250	300	4000
1TR.082	8,20	250	300	3500
1TR.095	9,50	250	300	3000
1TR.119	11,90	250	300	3000
1TR.146	14,60	250	280	3000
1TR.168	16,80	250	280	3000
1TR.192	19,20	150	280	3000
1TR.229	22,90	210	250	3000
1TR.250	25,00	210	250	3000
1TR.281	28,10	175	230	3000



2TR Group Standard Pumps

Type	Displacement (CC/RPM)	Working Pressure (BAR)		Max. RPM (RPM/Min)
		Continuous	Peak	
2T1.3090	28,80	260	300	4000
2T1.3105	33,30	250	300	4000
2T1.3120	37,80	210	300	3500
2T1.3135	42,60	210	300	3000
2T1.3146	45,40	210	300	3000
2T1.3158	49,40	210	280	4000
2T1.3180	56,10	175	280	4000

2 Tandem Pump

Group 1 Front Pump		Group 1 Rear Pump	
Code	cm ³ /RPM	Code	cm ³ /RPM
F1TR.040	4,00	R1TR.040	4,00
F1TR.060	6,00	R1TR.060	6,00
F1TR.082	8,20	R1TR.082	8,20
F1TR.095	9,50	R1TR.095	9,50
F1TR.119	11,90	R1TR.119	11,90
F1TR.146	14,60	R1TR.146	14,60
F1TR.168	16,80	R1TR.168	16,80
F1TR.192	19,20	R1TR.192	19,20
F1TR.229	22,90	R1TR.229	22,90
F1TR.250	25,00	R1TR.250	25,00
F1TR.281	28,10	R1TR.281	28,10



2 Tandem Pump

Group 2 Front Pump		Group 2 Rear Pump	
Code	cm ³ /RPM	Code	cm ³ /RPM
2T1.3090	28,80	R1TR.040	4,00
2T1.3105	33,30	R1TR.060	6,00
2T1.3120	37,80	R1TR.082	8,20
2T1.3135	42,60	R1TR.095	9,50
2T1.3146	45,40	R1TR.119	11,90
2T1.3158	49,40	R1TR.146	14,60
		R1TR.168	16,80
		R1TR.192	19,20
		R1TR.229	22,90
		R1TR.250	25,00
		R1TR.281	28,10



BMM Series Orbit Hydromotors

Type	Shaft Diameter	Displacement (CC/RPM)	RPM/Min	Pressure (BAR)	Max. Torque (daNM)	Max. Flow (Lt/Min)
BMM 8	16	8,2	1950	100	1,1	20
BMM 12,5	16	12,96	1550	100	1,6	20
BMM 20	16	19,9	1000	100	2,5	20
BMM 32	16	31,6	630	100	4	20
BMM 40	16	39,8	500	90	4,5	20
BMM 50	16	50,3	400	70	4,6	20

BMR Series Orbit Hydromotors

Type	Shaft Diameter	Displacement (CC/RPM)	RPM/Min	Pressure (BAR)	Max. Torque (daNM)	Max. Flow (Lt/Min)
BMR 36	25	36	1055	140	6,9	40
BMR 50	25	51,3	755	140	10	40
BMR 80	25	80,6	750	140	16	60
BMR 100	25	100,8	600	140	20	60
BMR 125	25	124,9	475	140	25	60
BMR 160	25	157,2	375	140	32	60
BMR 200	25	199,2	300	120	33	60
BMR 250	25	252	240	110	35,2	60
BMR 315	25	314,5	190	85	36	60
BMR 400	25	395	180	70	40	60



BMH Series Orbit Hydromotors

Type	Shaft Diameter	Displacement (CC/RPM)	RPM/Min	Pressure (BAR)	Max. Torque (daNM)	Max. Flow (Lt/Min)
BMH 200	32	230,2	263	125	29,8	60
BMH 250	32	255,9	209	125	37,5	60
BMH 315	32	316,1	169	125	45,4	60
BMH 400	32	406,4	131	100	47,7	60
BMH 500	32	489,2	109	80	45,9	60
BMH 500 CB	32	489,2	109	80	45,9	60



BMS Series Orbit Hydromotors

Type	Shaft Diameter	Displacement (CC/RPM)	RPM/Min	Pressure (BAR)	Max. Torque (daNM)	Max. Flow (Lt/Min)
BMS 80	32	80,6	675	160	17,5	65
BMS 100	32	100,8	540	160	22	75
BMS 125	32	125	432	160	27,3	75
BMS 160	32	157,2	337	150	31,6	75
BMS 200	32	200	270	125	34	75
BMS 250	32	252	216	125	45	75
BMS 315	32	314,5	171	120	56	75
BMS 400	32	396	160	100	60	75



BMT Series Orbit Hydromotors

Type	Shaft Diameter	Displacement (CC/RPM)	RPM/Min	Pressure (BAR)	Max. Torque (daNM)	Max. Flow (Lt/Min)
BMT 200	40	201,4	475	160	47,1	100
BMT 250	40	251,8	381	160	58,2	100
BMT 315	40	326,3	294	160	75,8	100
BMT 400	40	410,9	228	150	89,6	100
BMT 500	40	523,6	183	140	106,3	100
BMT 630	40	629,1	150	120	115,6	100
BMT 800	40	801,8	121	105	120,7	100



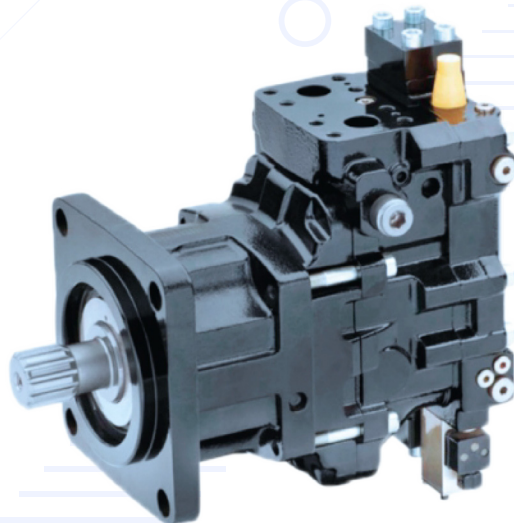


BMV Series Orbit Hydromotors						
Type	Shaft Diameter	Displacement (CC/RPM)	RPM/Min	Pressure (BAR)	Max. Torque (daNM)	Max. Flow (Lt/Min)
BMV 315	50	333	335	160	73	110
BMV 400	50	419	270	160	102	110
BMV 500	50	518	215	160	121	110
BMV 630	50	666	170	160	142,2	110
BMV 800	50	801	140	140	159	110

Radial Motors

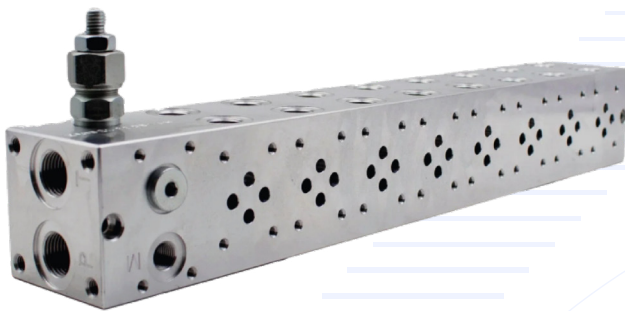
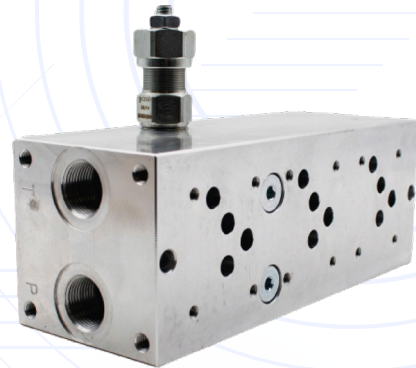


Variable Displacement Motors



TP6 Multi Stational Plate

Code	Description	Max. Pressure (BAR)	Max. Flow (Lt/Min)
TP6-1	2+1	350	45
TP6-2	3+1	350	45
TP6-3	4+1	350	45
TP6-4	5+1	350	45
TP6-5	6+1	350	45
TP6-6	7+1	350	45



TP10 Multi Stational Plate

Code	Description	Max. Pressure (BAR)	Max. Flow (Lt/Min)
TP10-1	2+1	350	80
TP10-2	3+1	350	80
TP10-3	4+1	350	80
TP10-4	5+1	350	80

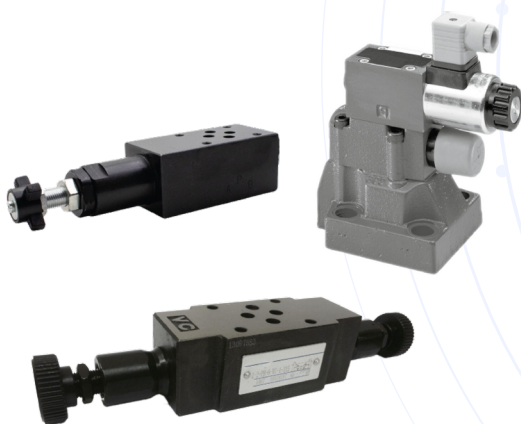
Modular Lock

Code	Location	Max. Pressure (BAR)	Max. Flow (Lt/Min)
PCV-02M-W	AB Line TR 6	210	35
PCV-03M-W	AB Line TR 10	210	70
Z2S-16	A-B Lock TP-16	315	200
Z2S-22	A-B Lock TP-25	315	360



Modular Pressure

Code	Location	Max. Pressure (BAR)	Max. Flow (Lt/Min)
RV-02M-P	P Line TR 6	70-210	35
RV-02M-A	A Line TR 6	70-210	35
RV-02M-B	B Line TR 6	70-210	35
RV-02M-W	A-B Line TR 6	70-210	35
RV-03M-P	P Line TR 10	70-210	70
RV-03M-A	A Line TR 10	70-210	70
RV-03M-B	B Line TR 10	70-210	70
RV-03M-W	A-B Line TR 10	70-210	70



HYDRAULIC HOSES

SINGLE WIRE	
Dimension	Pressure (BAR)
3/16	250
1/4	225
5/16	215
3/8	180
1/2	160
5/8	130
3/4	105
1"	88
1 1/4	63
1 1/2	50
2"	40
2 1/2"	40
3"	35

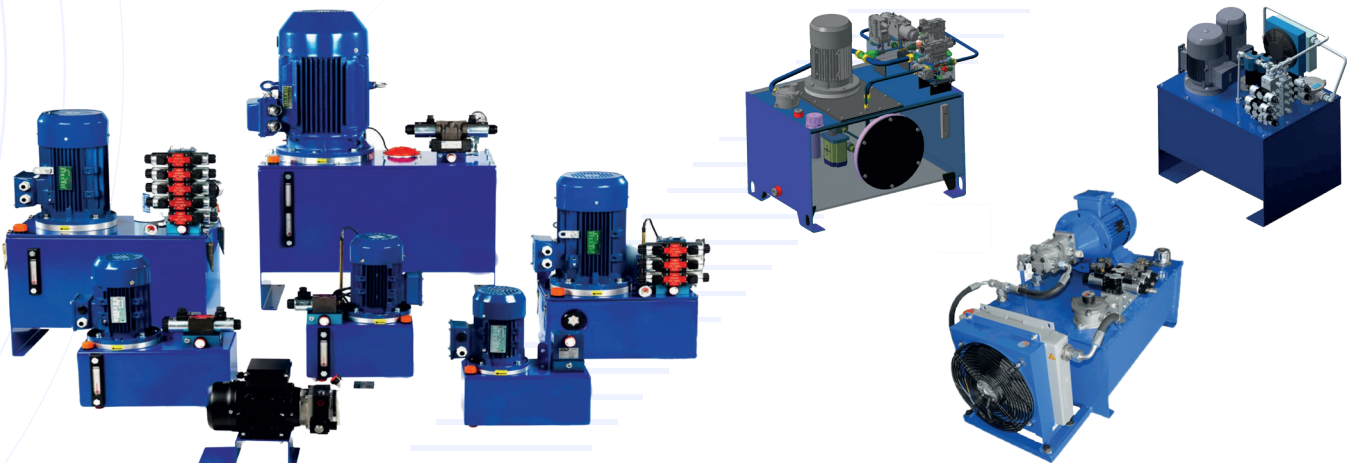


DOUBLE WIRE	
Dimension	Pressure (BAR)
3/16	415
1/4	400
5/16	350
3/8	330
1/2	275
5/8	250
3/4	215
1"	165
1 1/4	125
1 1/2	90
2"	78
2 1/2"	69
3"	50

HYDRAULIC PISTONS



POWER PACKS



TORRA LLC



📍 11417 IL 19, Franklin Park, IL 60131
☎️ (630) 785-2410
📞 (331) 688-4947
🌐 www.toracompany.com
✉️ info@toracompany.com



[toracompany](https://www.toracompany.com)



[tora.company](https://www.toracompany.com)



www.toracompany.com