



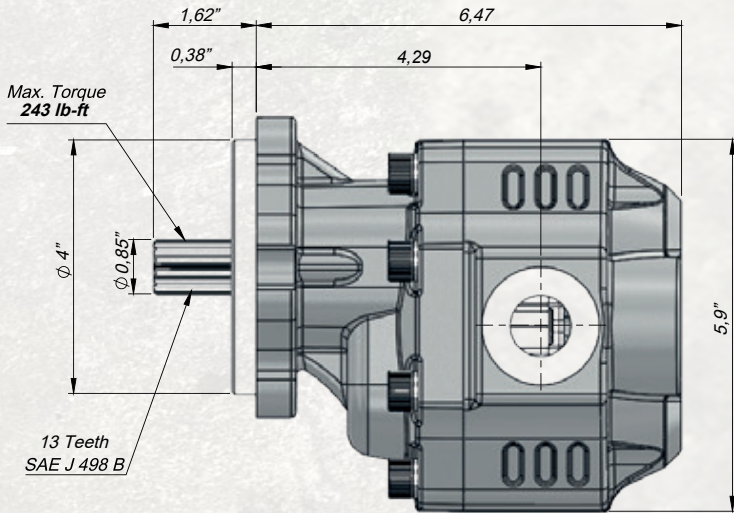
HYDRAULIC GEAR PUMP



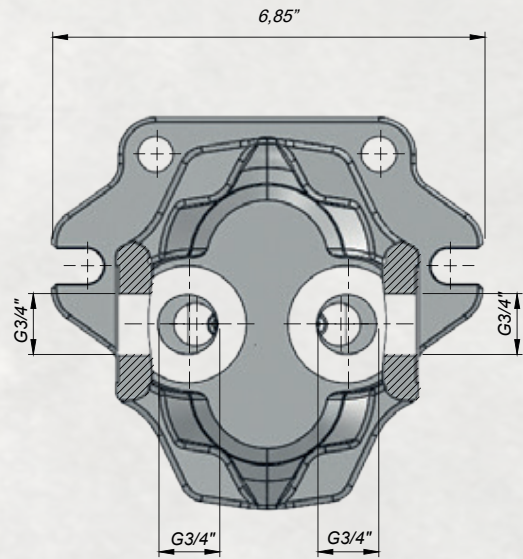
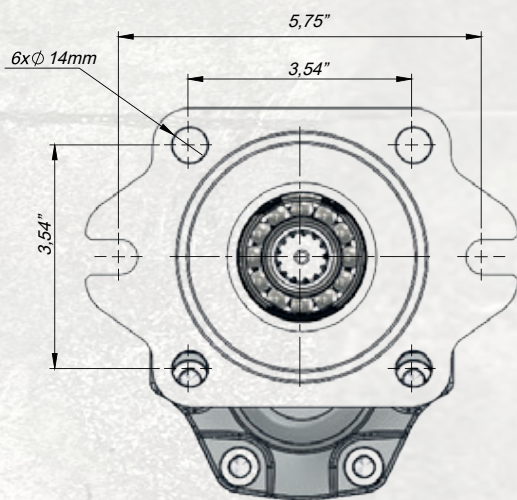
2+4 HOLES SAE B 13 T BI-DIRECTIONAL
4 PORT GEAR PUMP



9 GPM Hydraulic Gear Pump

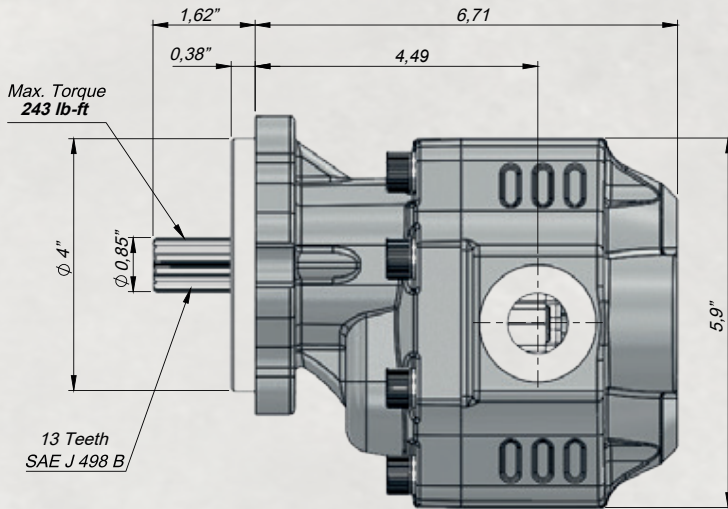


Inlet Pressure		4.35 ÷ 29 PSI	
Operating Viscosity Range		-12:100 cSt	
Fluid Temperature		-40 °F +293 °F	
Working Pressure	Contamination		Filter βx=75
	NAS 1638	ISO 4406	
≥2900 PSI	11	20/17	25 μm
≤2900 PSI	12	21/18	40 μm

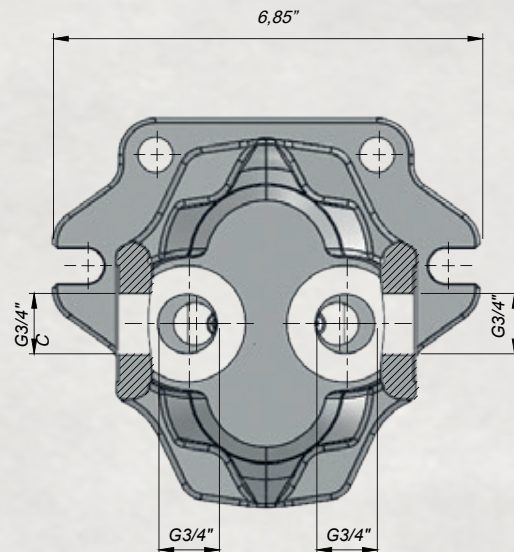
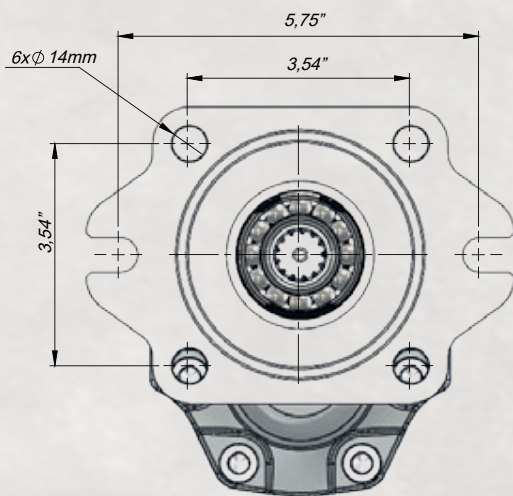


Code BD	Displacement (GPM)	Max. Continuous Pressure (%100)(PSI)	Min. Speed (RPM)	Max. Continuous Speed (RPM)
KH01020340422B-2	9	3771	300	2000

11 GPM Hydraulic Gear Pump

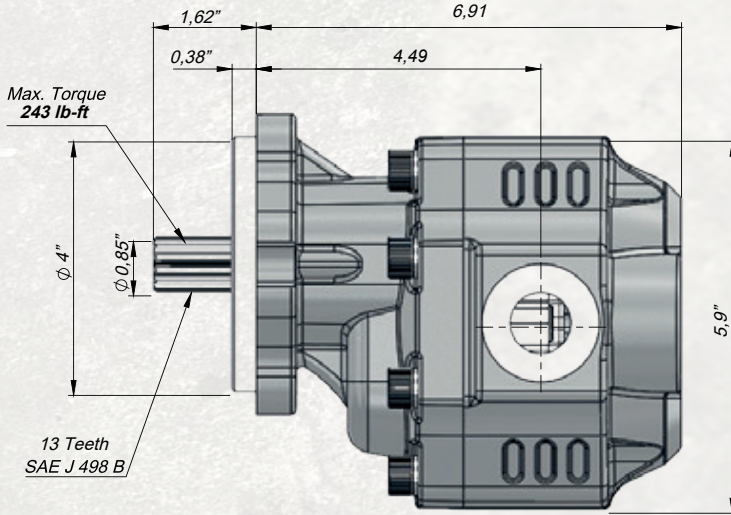


Inlet Pressure		4.35 ÷ 29 PSI	
Operating Viscosity Range		-12:100 cSt	
Fluid Temperature		-40 °F +293 °F	
Working Pressure	Contamination		Filter βx=75
	NAS 1638	ISO 4406	
≥2900 PSI	11	20/17	25 μm
≤2900 PSI	12	21/18	40 μm

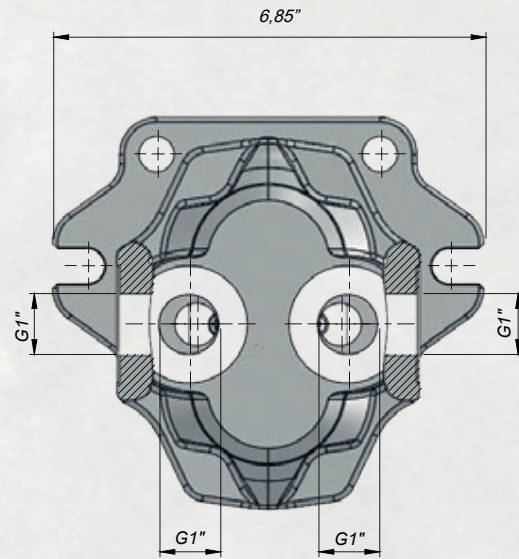
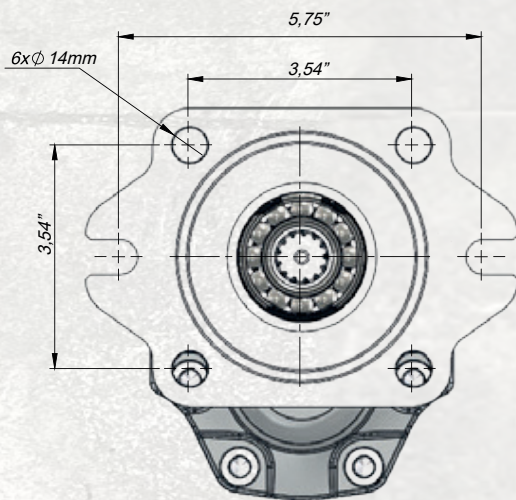


Code BD	Displacement (GPM)	Max. Continuous Pressure (%100)(PSI)	Min. Speed (RPM)	Max. Continuous Speed (RPM)
KH01020430422B-2	11	3626	300	1800

13.5 GPM Hydraulic Gear Pump

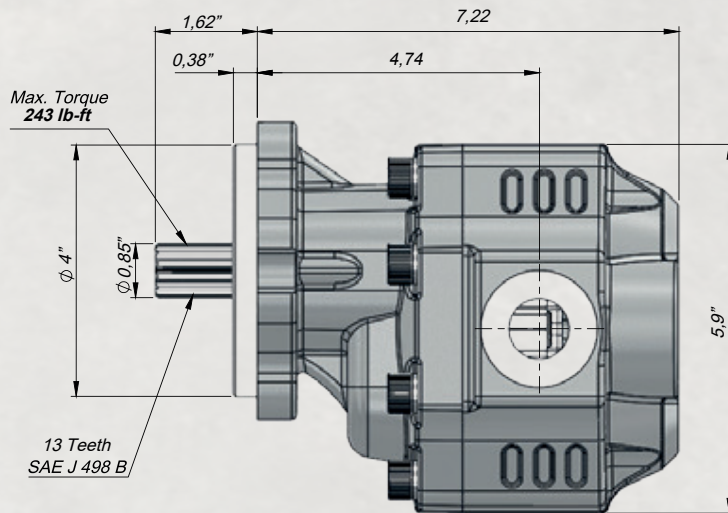


Inlet Pressure		4.35 ÷ 29 PSI	
Operating Viscosity Range		-12:100 cSt	
Fluid Temperature		-40 °F +293 °F	
Working Pressure	Contamination		Filter βx=75
	NAS 1638	ISO 4406	
≥2900 PSI	11	20/17	25 μm
≤2900 PSI	12	21/18	40 μm

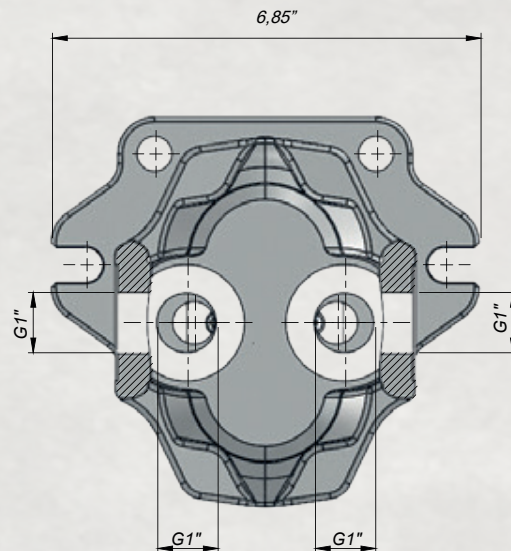
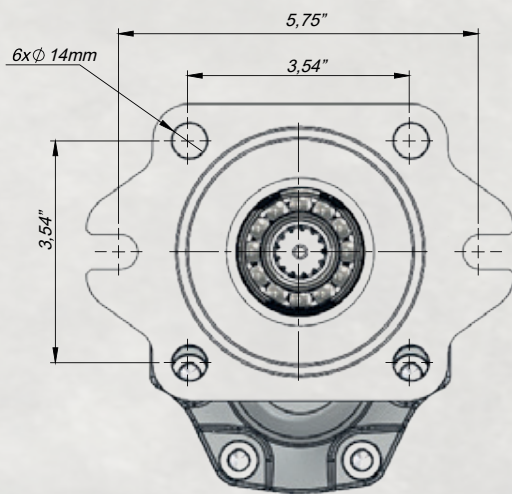


Code BD	Displacement (GPM)	Max. Continuous Pressure (%100)(PSI)	Min. Speed (RPM)	Max. Continuous Speed (RPM)
KH01020510422B-2	13,5	2901	300	1800

16 GPM Hydraulic Gear Pump

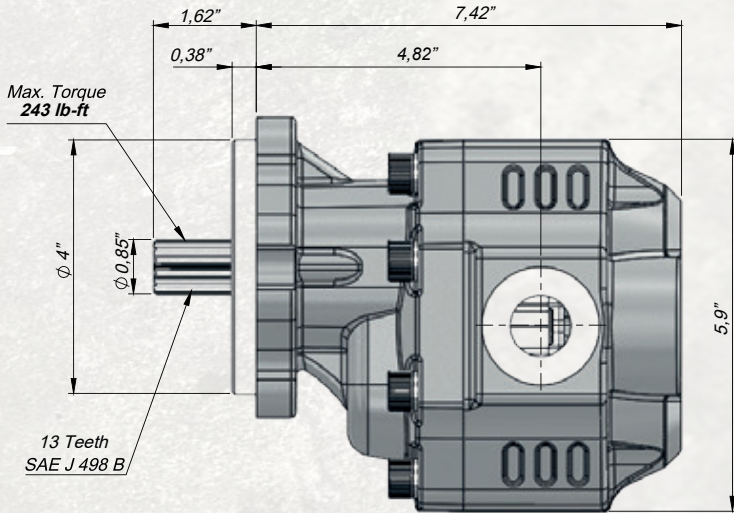


Inlet Pressure		4.35 ÷ 29 PSI	
Operating Viscosity Range		-12:100 cSt	
Fluid Temperature		-40 °F +293 °F	
Working Pressure	Contamination		Filter $\beta_x=75$
	NAS 1638	ISO 4406	
≥ 2900 PSI	11	20/17	25 μm
≤ 2900 PSI	12	21/18	40 μm

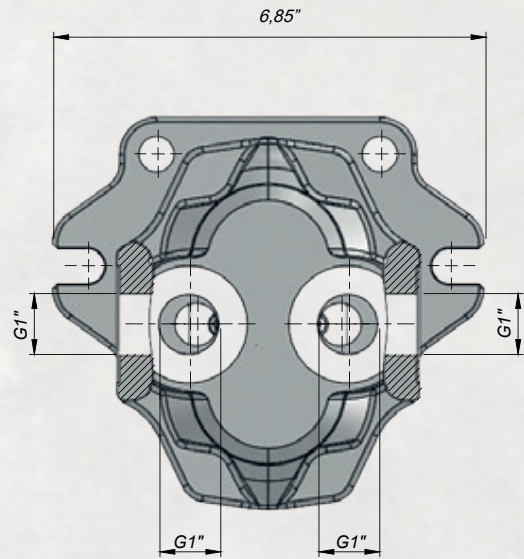
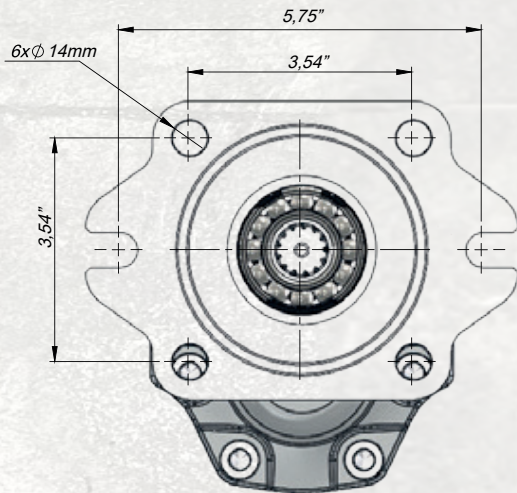


Code BD	Displacement (GPM)	Max. Continuous Pressure (%100)(PSI)	Min. Speed (RPM)	Max. Continuous Speed (RPM)
KH01020610422B-2	16	2828	300	1600

19 GPM Hydraulic Gear Pump

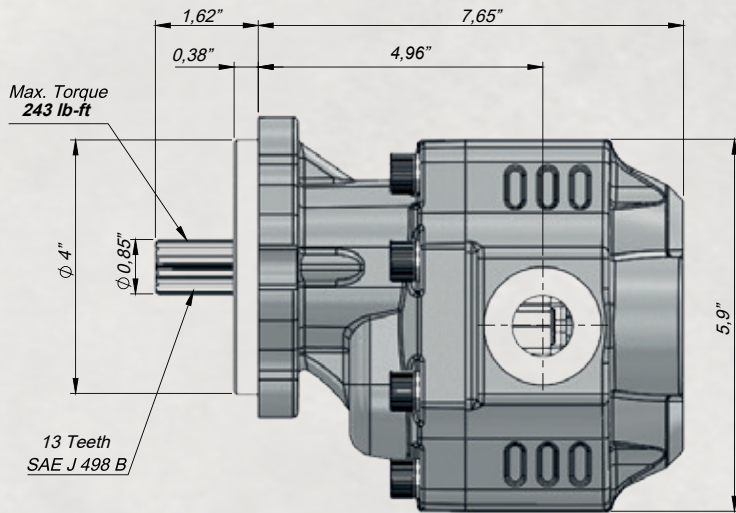


Inlet Pressure		4.35 ÷ 29 PSI	
Operating Viscosity Range		-12:100 cSt	
Fluid Temperature		-40 °F +293 °F	
Working Pressure	Contamination		Filter βx=75
	NAS 1638	ISO 4406	
≥2900 PSI	11	20/17	25 μm
≤2900 PSI	12	21/18	40 μm

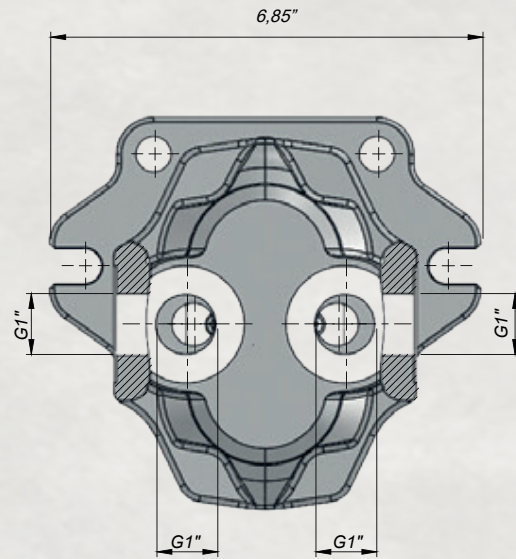
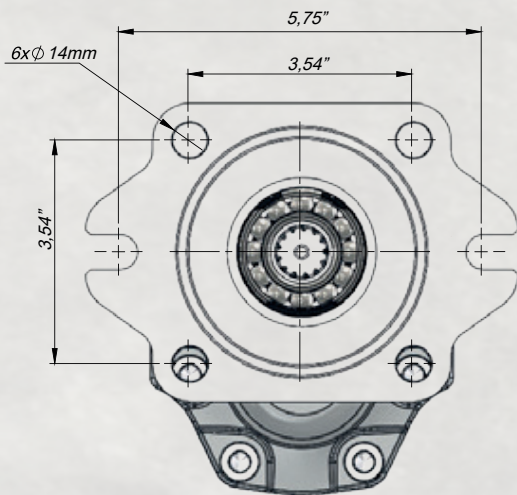


Code BD	Displacement (GPM)	Max. Continuous Pressure (%100)(PSI)	Min. Speed (RPM)	Max. Continuous Speed (RPM)
KH01020730422B-2	19	2756	300	1600

21.5 GPM Hydraulic Gear Pump



Inlet Pressure		4.35 ÷ 29 PSI	
Operating Viscosity Range		-12:100 cSt	
Fluid Temperature		-40 °F +293 °F	
Working Pressure	Contamination		Filter βx=75
	NAS 1638	ISO 4406	
≥2900 PSI	11	20/17	25 μm
≤2900 PSI	12	21/18	40 μm

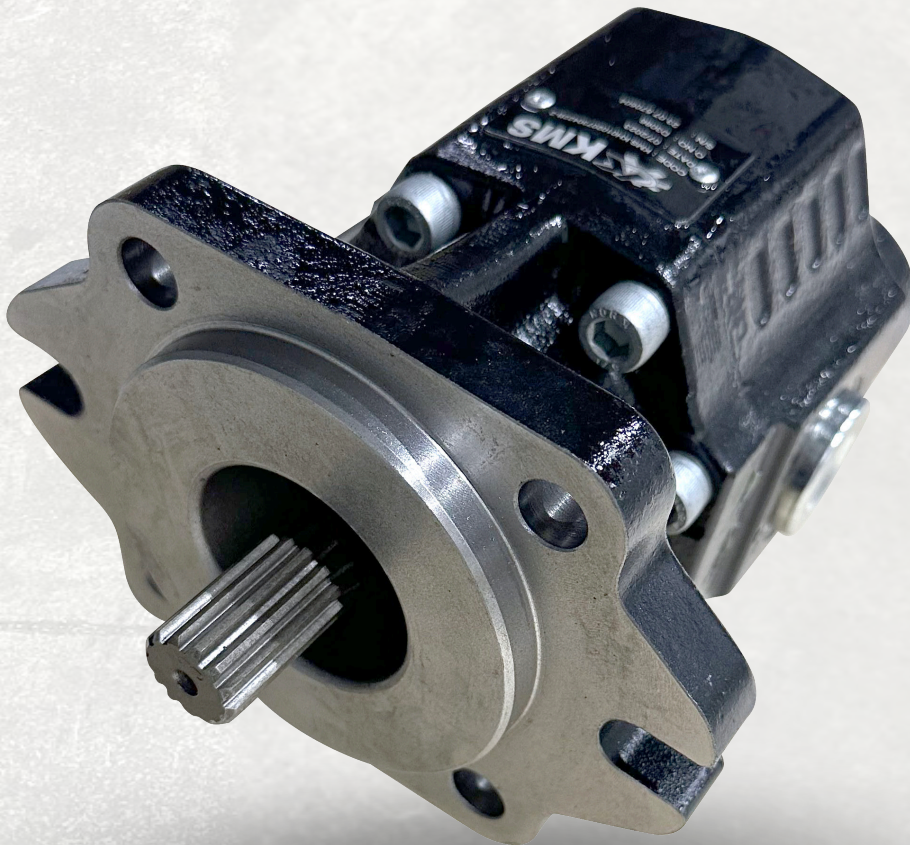


Code BD	Displacement (GPM)	Max. Continuous Pressure (%100)(PSI)	Min. Speed (RPM)	Max. Continuous Speed (RPM)
KH01020820422B-2	21,5	2611	300	1500






HYDRAULIC GEAR PUMP



2+4 HOLES SAE B 13 T BI-DIRECTIONAL
4 PORT GEAR PUMP

 www.toracompany.com
 www.kmspowertakeoff.com
 info@toracompany.com
 11417 IL 19, Franklin Park, IL 60131
 (630) 785-2410
 (331) 688-4947



[toracompany](https://www.facebook.com/toracompany)



[tora.company](https://www.instagram.com/tora.company)



www.toracompany.com

