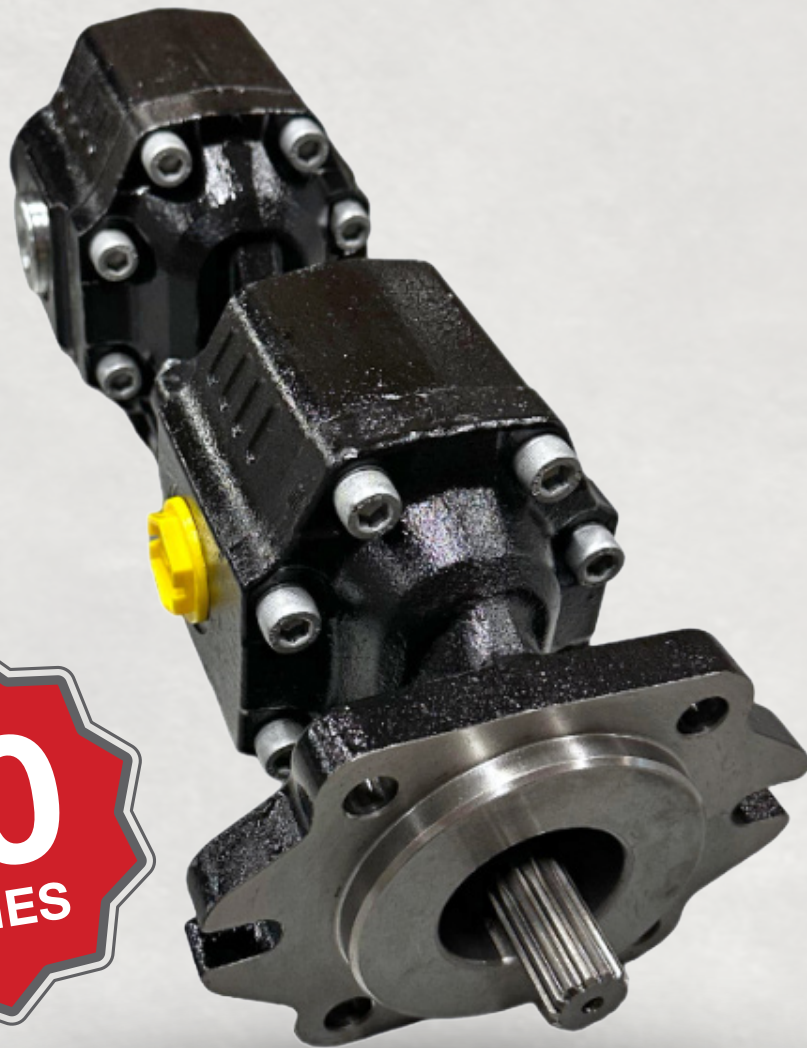




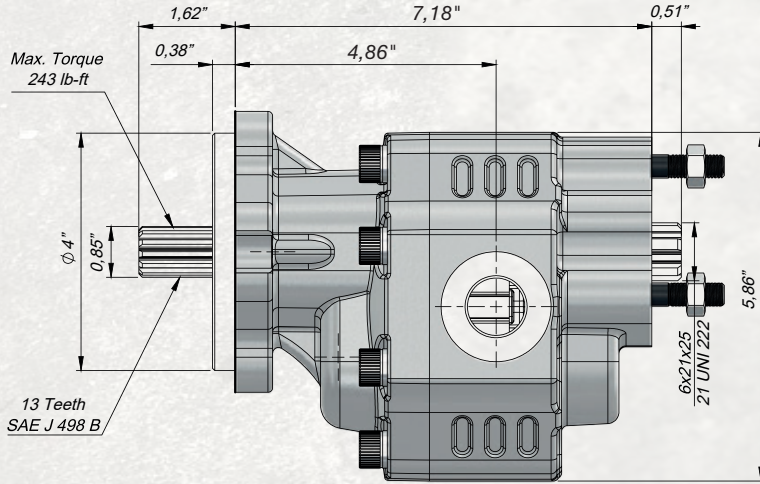
HYDRAULIC GEAR TANDEM PUMP



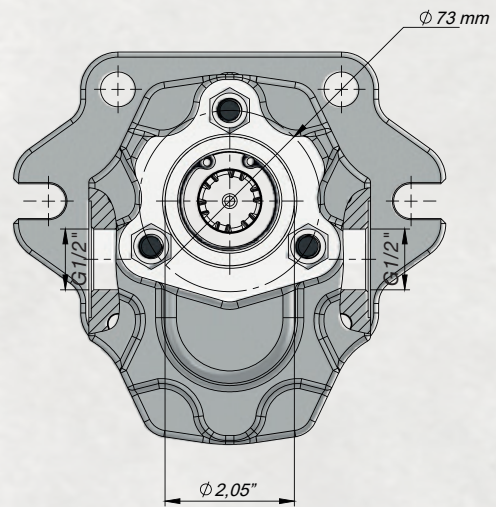
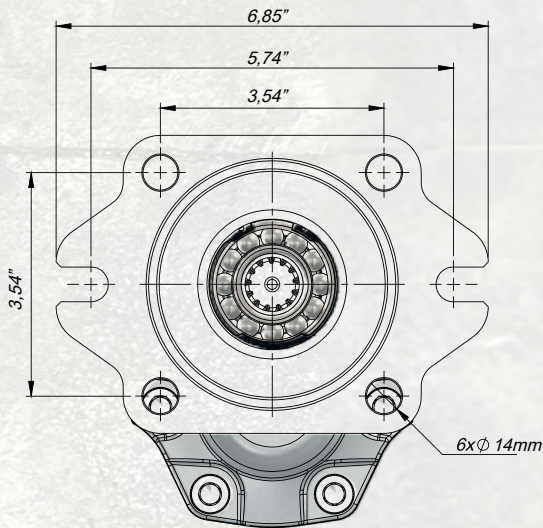
2+4 HOLES SAE-B 13T BI-DIRECTIONAL
TANDEM GEAR PUMP (Primary Pump)



4,5 GPM Hydraulic Gear Tandem Pump

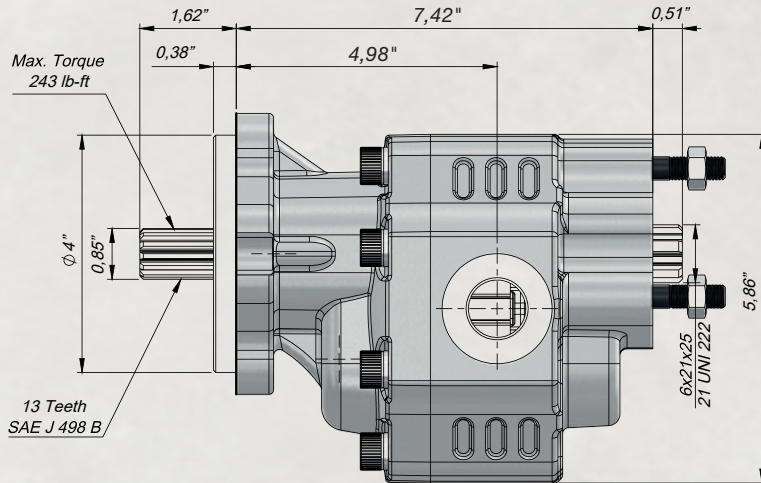


Inlet Pressure		4.35 ÷ 29 PSI	
Operating Viscosity Range		-12:100 cSt	
Fluid Temperature		-40 °F +293 °F	
Working Pressure	Contamination		Filter βx=75
	NAS 1638	ISO 4406	
≥2900 PSI	11	20/17	25 μm
≤2900 PSI	12	21/18	40 μm

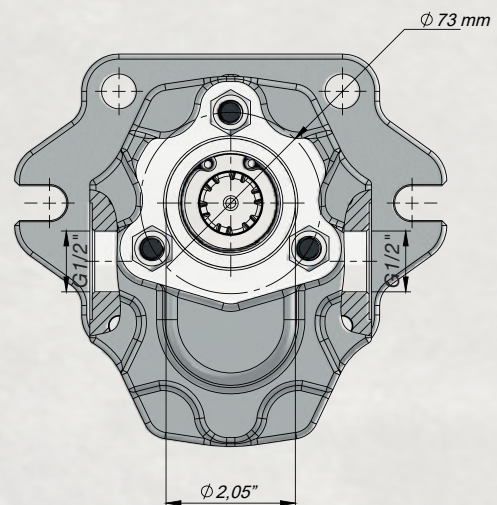
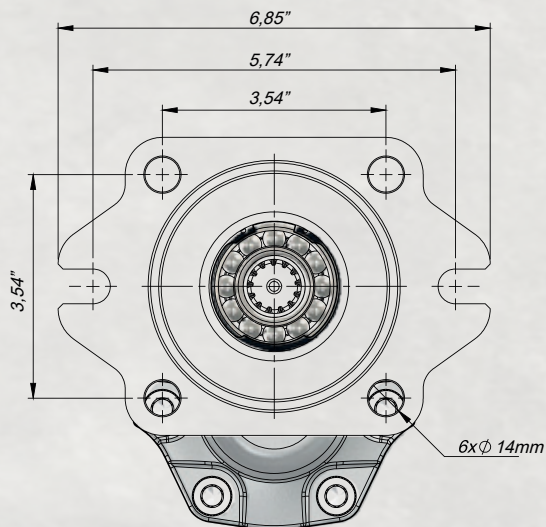


Code BD	Displacement (GPM)	Max. Continuous Pressure (%100)(PSI)	Min. Speed (RPM)	Max. Speed (RPM)
KH01020170431B-2	4,5	4351	300	2600

7 GPM Hydraulic Gear Tandem Pump

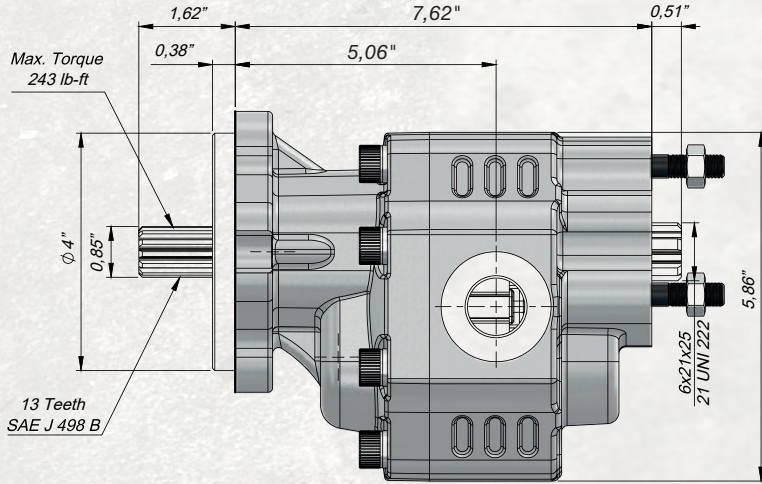


Inlet Pressure	4.35 ÷ 29 PSI		
Operating Viscosity Range	-12:100 cSt		
Fluid Temperature	-40 °F +293 °F		
Working Pressure	Contamination		Filter βx=75
	NAS 1638	ISO 4406	
≥2900 PSI	11	20/17	25 μm
≤2900 PSI	12	21/18	40 μm

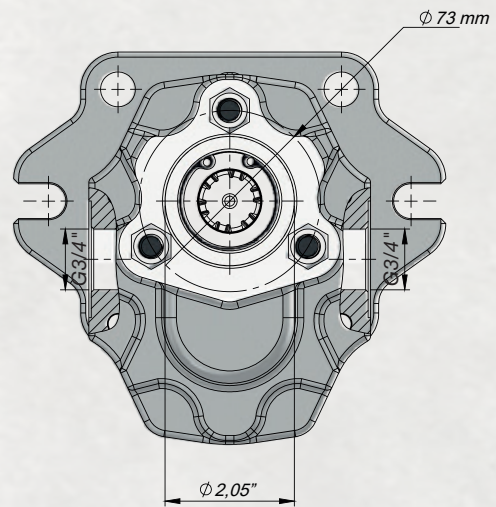
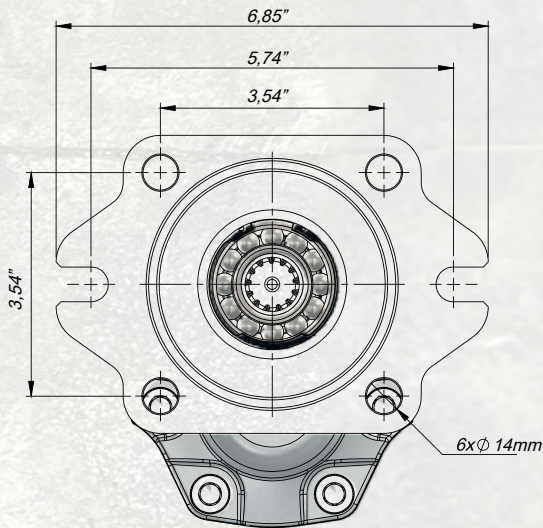


Code BD	Displacement (GPM)	Max. Continuous Pressure (%100)(PSI)	Min. Speed (RPM)	Max. Speed (RPM)
KH01020270431B-2	7	4206	300	2600

9 GPM Hydraulic Gear Tandem Pump

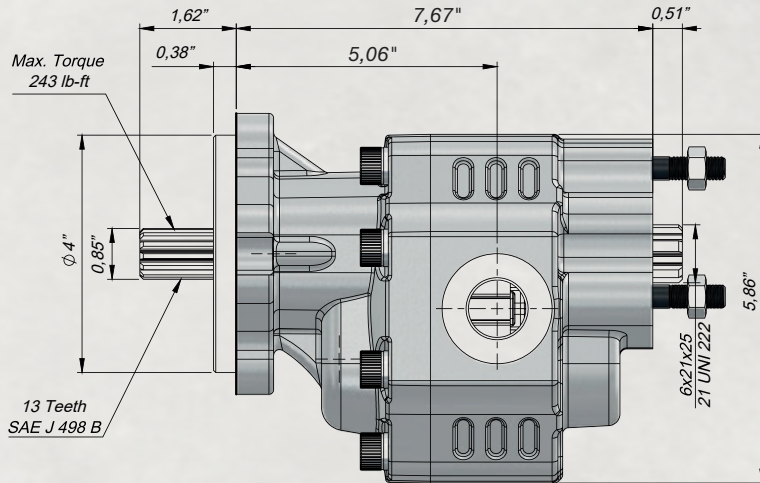


Inlet Pressure		4.35 ÷ 29 PSI	
Operating Viscosity Range		-12:100 cSt	
Fluid Temperature		-40 °F +293 °F	
Working Pressure	Contamination		Filter βx=75
	NAS 1638	ISO 4406	
≥2900 PSI	11	20/17	25 μm
≤2900 PSI	12	21/18	40 μm

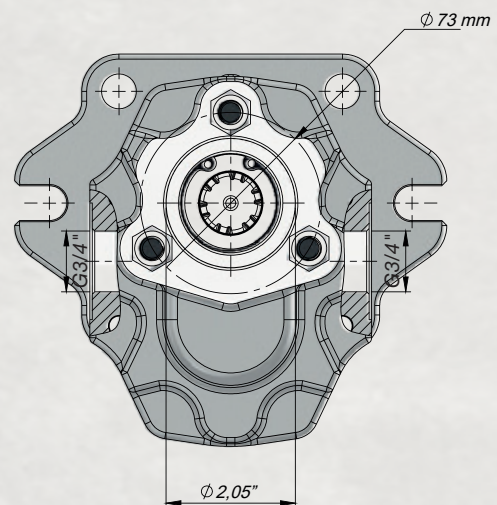
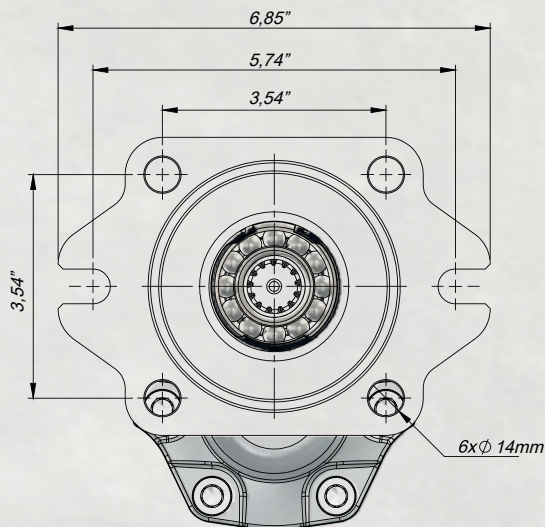


Code BD	Displacement (GPM)	Max. Continuous Pressure (%100)(PSI)	Min. Speed (RPM)	Max. Speed (RPM)
KH01020340431B-2	9	4133	300	2300

9,5 GPM Hydraulic Gear Tandem Pump

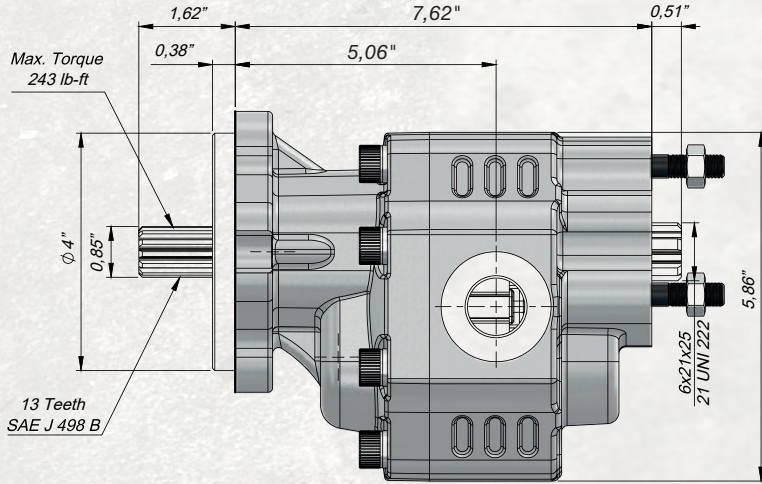


Inlet Pressure		4.35 ÷ 29 PSI	
Operating Viscosity Range		-12:100 cSt	
Fluid Temperature		-40 °F +293 °F	
Working Pressure	Contamination		Filter βx=75
	NAS 1638	ISO 4406	
≥2900 PSI	11	20/17	25 μm
≤2900 PSI	12	21/18	40 μm

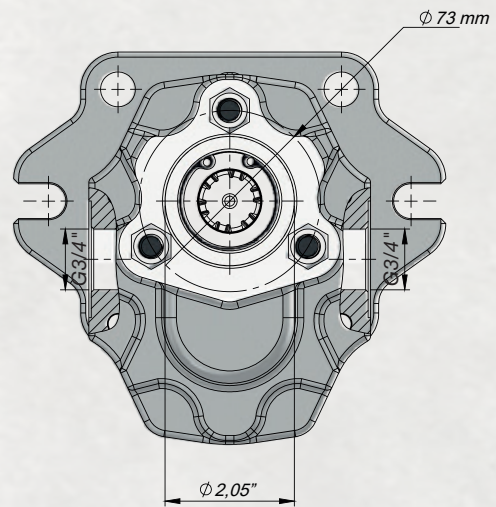
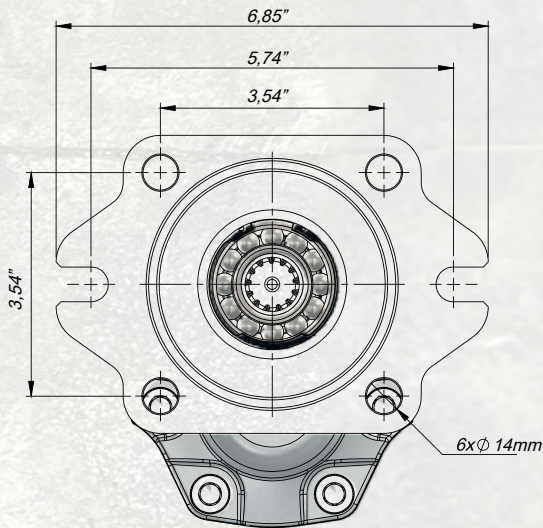


Code BD	Displacement (GPM)	Max. Continuous Pressure (%100)(PSI)	Min. Speed (RPM)	Max. Speed (RPM)
KH01020360431B-2	9,5	4133	300	2300

10 GPM Hydraulic Gear Tandem Pump

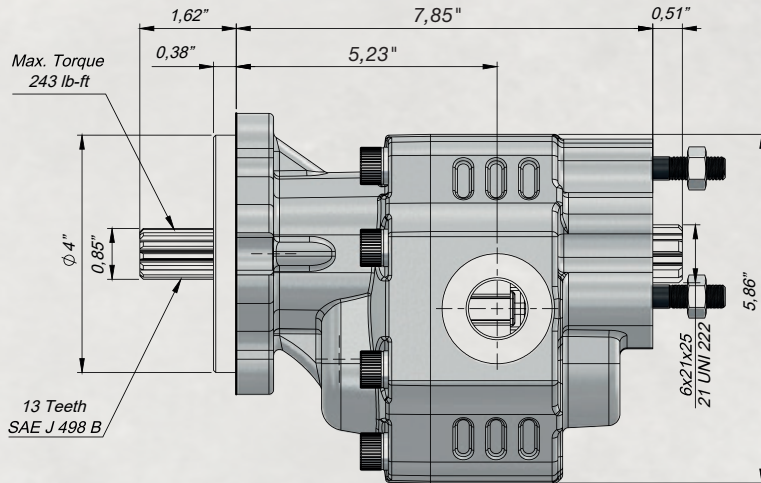


Inlet Pressure		4.35 ÷ 29 PSI	
Operating Viscosity Range		-12:100 cSt	
Fluid Temperature		-40 °F +293 °F	
Working Pressure	Contamination		Filter βx=75
	NAS 1638	ISO 4406	
≥2900 PSI	11	20/17	25 μm
≤2900 PSI	12	21/18	40 μm

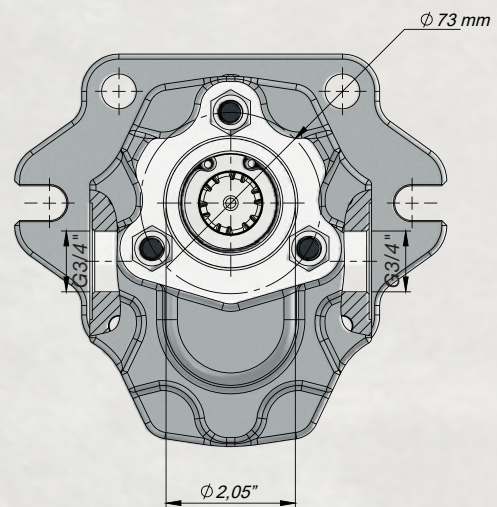
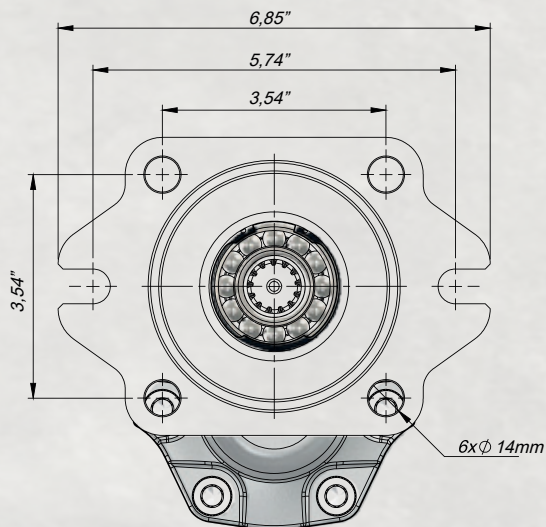


Code BD	Displacement (GPM)	Max. Continuous Pressure (%100)(PSI)	Min. Speed (RPM)	Max. Speed (RPM)
KH01020380431B-2	10	4133	300	2300

11 GPM Hydraulic Gear Tandem Pump

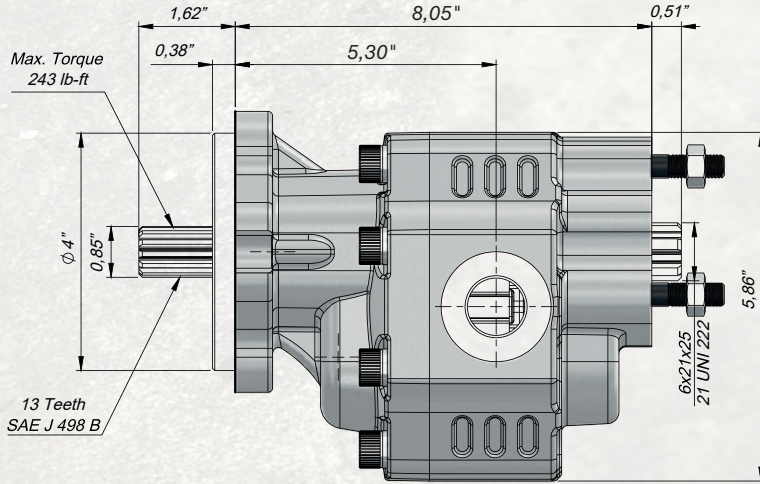


Inlet Pressure	4.35 ÷ 29 PSI		
Operating Viscosity Range	-12:100 cSt		
Fluid Temperature	-40 °F +293 °F		
Working Pressure	Contamination		Filter βx=75
	NAS 1638	ISO 4406	
≥2900 PSI	11	20/17	25 μm
≤2900 PSI	12	21/18	40 μm

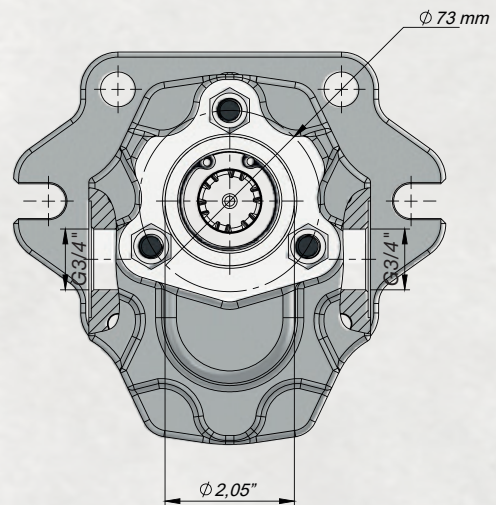
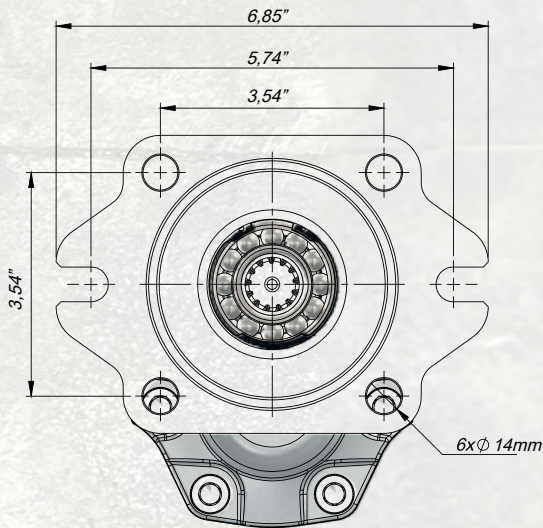


Code BD	Displacement (GPM)	Max. Continuous Pressure (%100)(PSI)	Min. Speed (RPM)	Max. Speed (RPM)
KH01020430431B-2	11	4061	300	2100

13,5 GPM Hydraulic Gear Tandem Pump

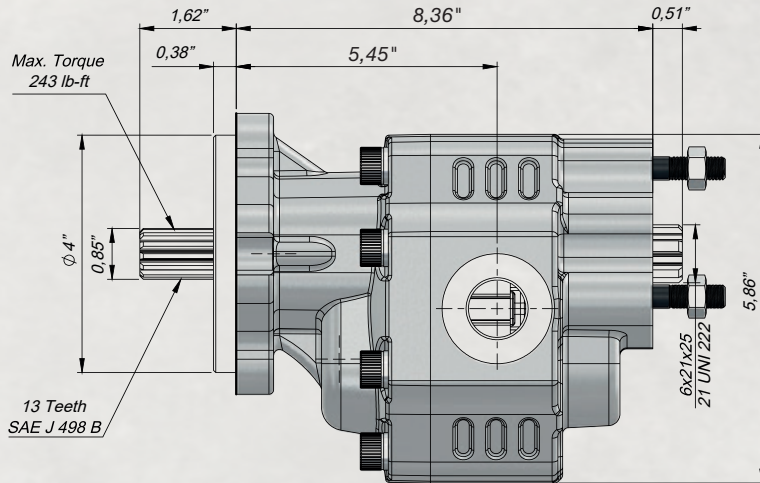


Inlet Pressure		4.35 ÷ 29 PSI	
Operating Viscosity Range		-12:100 cSt	
Fluid Temperature		-40 °F +293 °F	
Working Pressure	Contamination		Filter $\beta_x=75$
	NAS 1638	ISO 4406	
≥ 2900 PSI	11	20/17	25 μm
≤ 2900 PSI	12	21/18	40 μm

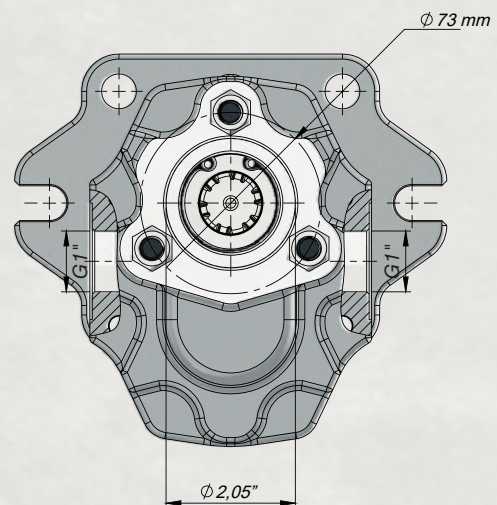
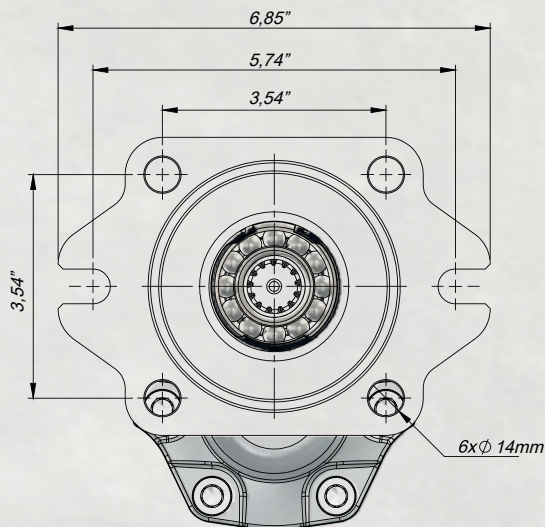


Code BD	Displacement (GPM)	Max. Continuous Pressure (%100)(PSI)	Min. Speed (RPM)	Max. Speed (RPM)
KH01020510431B-2	13,5	3335	300	2100

16 GPM Hydraulic Gear Tandem Pump

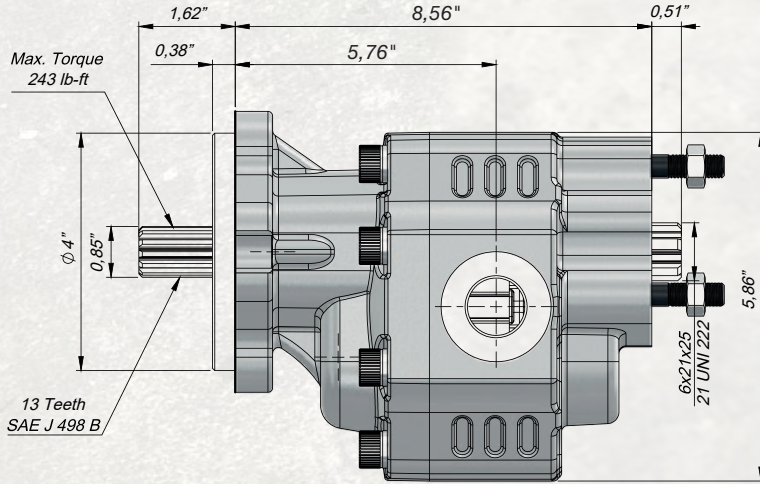


Inlet Pressure	4.35 ÷ 29 PSI		
Operating Viscosity Range	-12:100 cSt		
Fluid Temperature	-40 °F +293 °F		
Working Pressure	Contamination		Filter βx=75
	NAS 1638	ISO 4406	
≥2900 PSI	11	20/17	25 μm
≤2900 PSI	12	21/18	40 μm

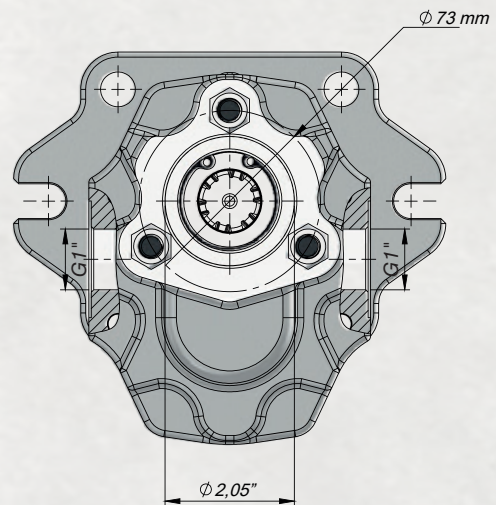
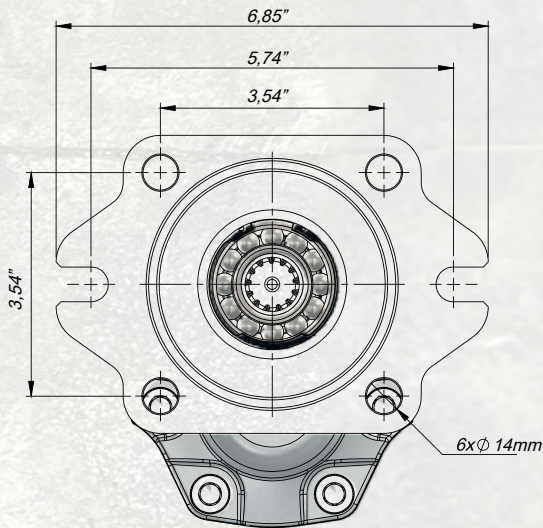


Code BD	Displacement (GPM)	Max. Continuous Pressure (%100)(PSI)	Min. Speed (RPM)	Max. Speed (RPM)
KH01020610431B-2	16	3263	300	2000

19 GPM Hydraulic Gear Tandem Pump

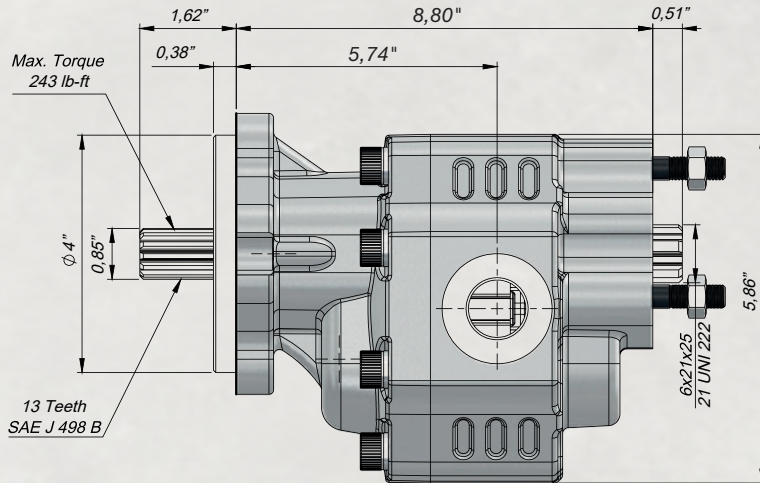


Inlet Pressure		4.35 ÷ 29 PSI	
Operating Viscosity Range		-12:100 cSt	
Fluid Temperature		-40 °F +293 °F	
Working Pressure	Contamination		Filter βx=75
	NAS 1638	ISO 4406	
≥2900 PSI	11	20/17	25 μm
≤2900 PSI	12	21/18	40 μm

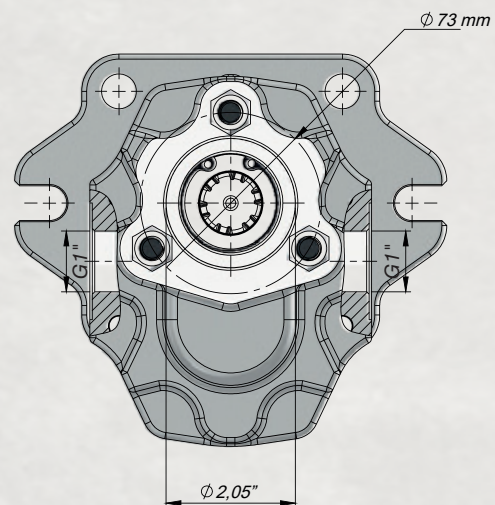
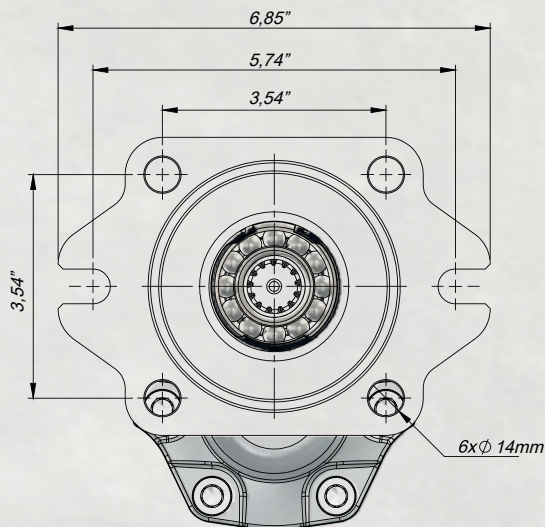


Code BD	Displacement (GPM)	Max. Continuous Pressure (%100)(PSI)	Min. Speed (RPM)	Max. Speed (RPM)
KH01020730431B-2	19	3118	300	1800

21,5 GPM Hydraulic Gear Tandem Pump

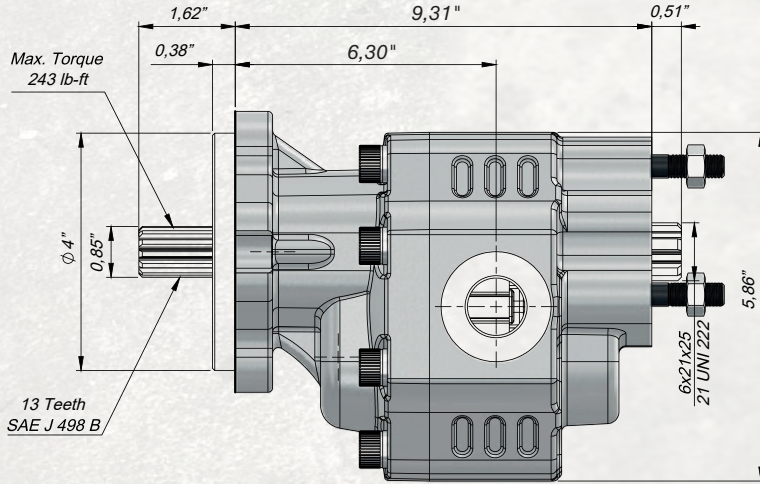


Inlet Pressure	4.35 ÷ 29 PSI		
Operating Viscosity Range	-12:100 cSt		
Fluid Temperature	-40 °F +293 °F		
Working Pressure	Contamination		Filter βx=75
	NAS 1638	ISO 4406	
≥2900 PSI	11	20/17	25 μm
≤2900 PSI	12	21/18	40 μm

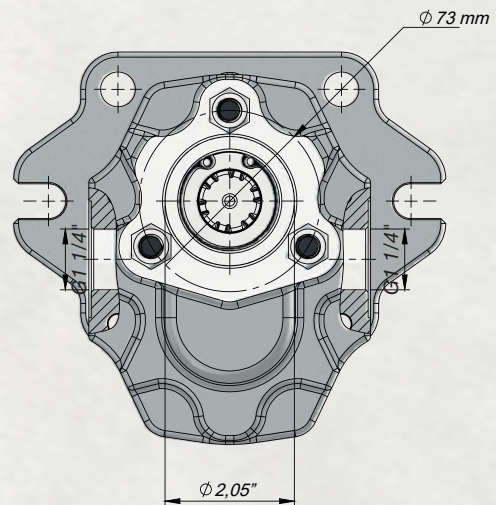
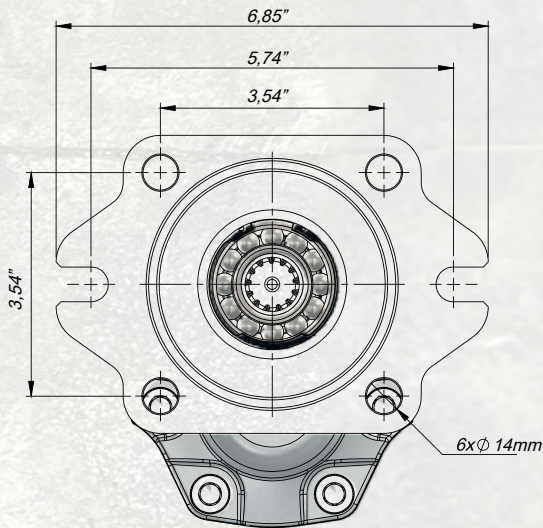


Code BD	Displacement (GPM)	Max. Continuous Pressure (%100)(PSI)	Min. Speed (RPM)	Max. Speed (RPM)
KH01020820431B-2	21,5	2900	300	1700

26 GPM Hydraulic Gear Tandem Pump

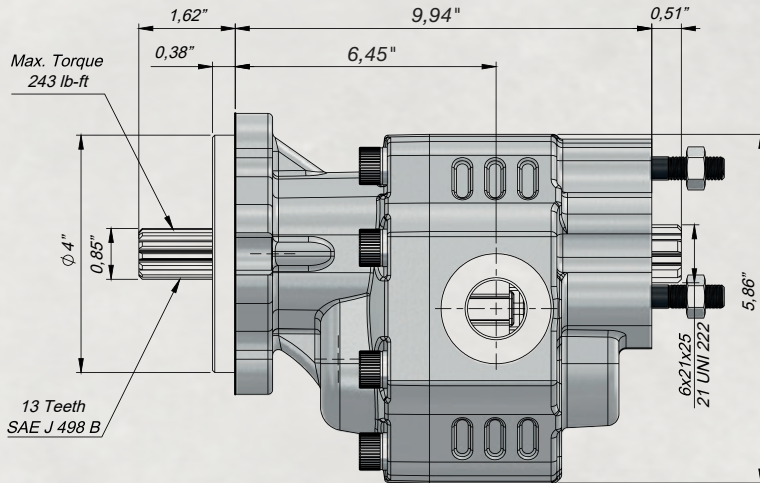


Inlet Pressure		4.35 ÷ 29 PSI	
Operating Viscosity Range		-12:100 cSt	
Fluid Temperature		-40 °F +293 °F	
Working Pressure	Contamination		Filter βx=75
	NAS 1638	ISO 4406	
≥2900 PSI	11	20/17	25 μm
≤2900 PSI	12	21/18	40 μm

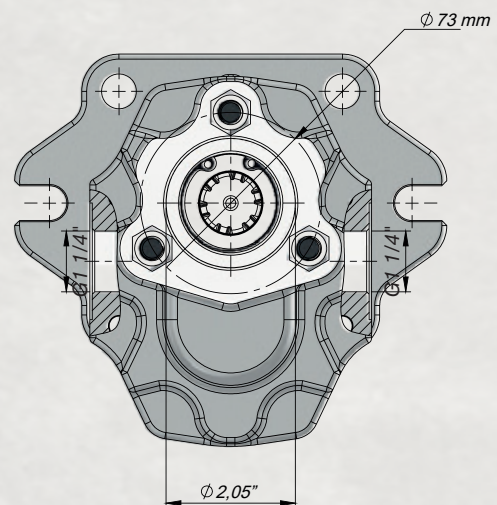
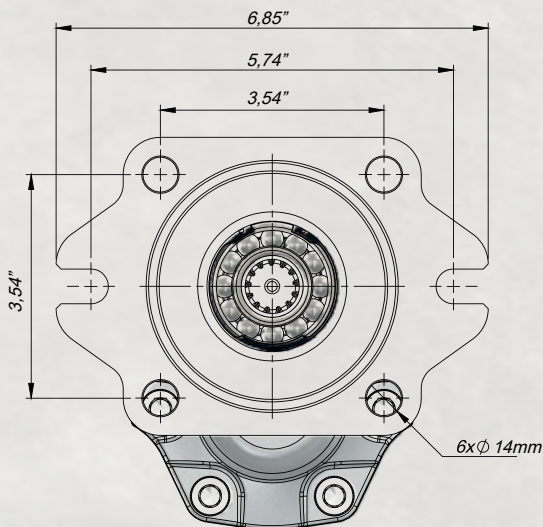


Code BD	Displacement (GPM)	Max. Continuous Pressure (%100)(PSI)	Min. Speed (RPM)	Max. Speed (RPM)
KH01021000431B-2	26	2755	300	1600

33 GPM Hydraulic Gear Tandem Pump



Inlet Pressure		4.35 ÷ 29 PSI	
Operating Viscosity Range		-12:100 cSt	
Fluid Temperature		-40 °F +293 °F	
Working Pressure	Contamination		Filter βx=75
	NAS 1638	ISO 4406	
≥2900 PSI	11	20/17	25 μm
≤2900 PSI	12	21/18	40 μm



Code BD	Displacement (GPM)	Max. Continuous Pressure (%100)(PSI)	Min. Speed (RPM)	Max. Speed (RPM)
KH01021250431B-2	33	2465	300	1600



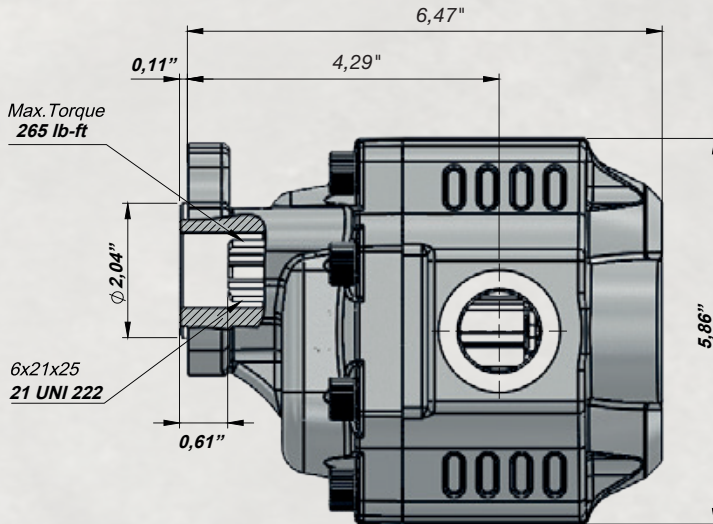
HYDRAULIC GEAR TANDEM PUMP



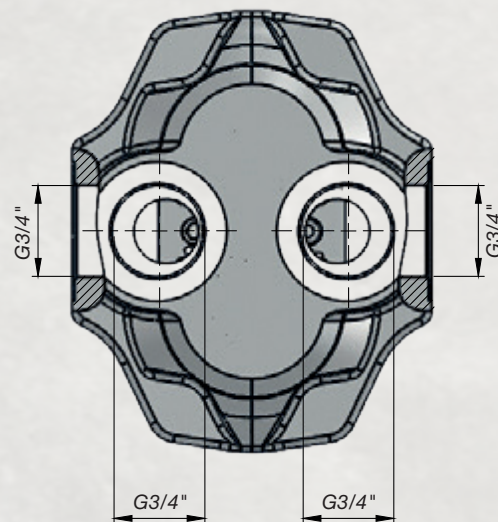
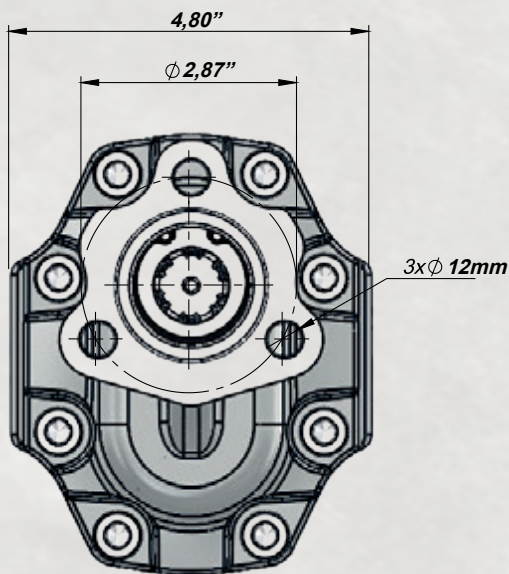
3 HOLES UNI 6T BI-DIRECTIONAL
4 PORT GEAR PUMP (Secondary Pump)



9 GPM Hydraulic Gear Pump

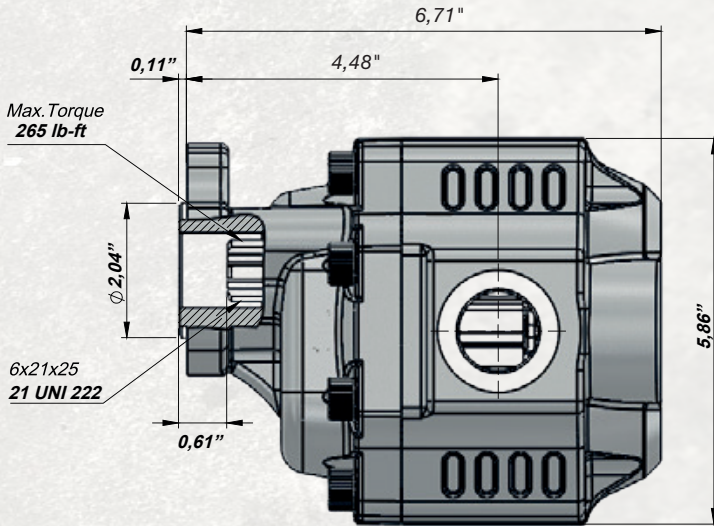


Inlet Pressure	4.35 ÷ 29 PSI		
Operating Viscosity Range	-12:100 cSt		
Fluid Temperature	-40 °F +293 °F		
Working Pressure	Contamination		Filter βx=75
	NAS 1638	ISO 4406	
≥2900 PSI	11	20/17	25 μm
≤2900 PSI	12	21/18	40 μm

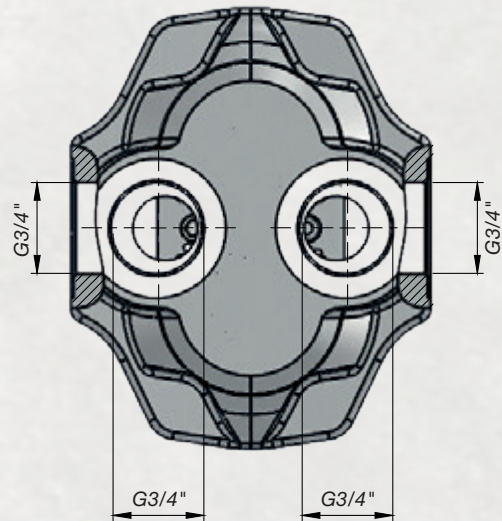
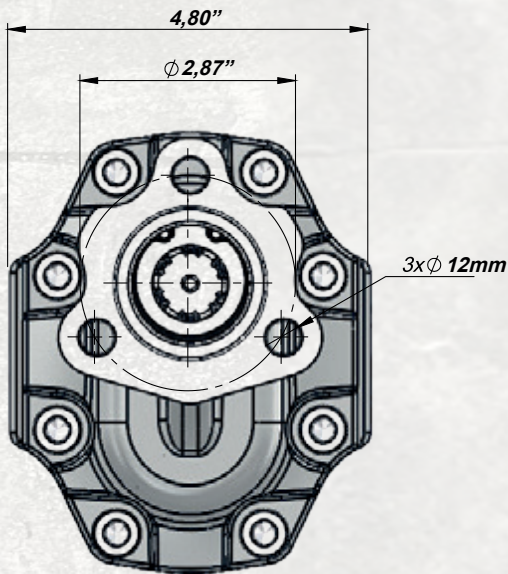


Code BD	Displacement (GPM)	Max. Continuous Pressure (%100)(PSI)	Min. Speed (RPM)	Max. Speed (RPM)
KH01020340222B-2	9	3770	300	2000

11 GPM Hydraulic Gear Pump

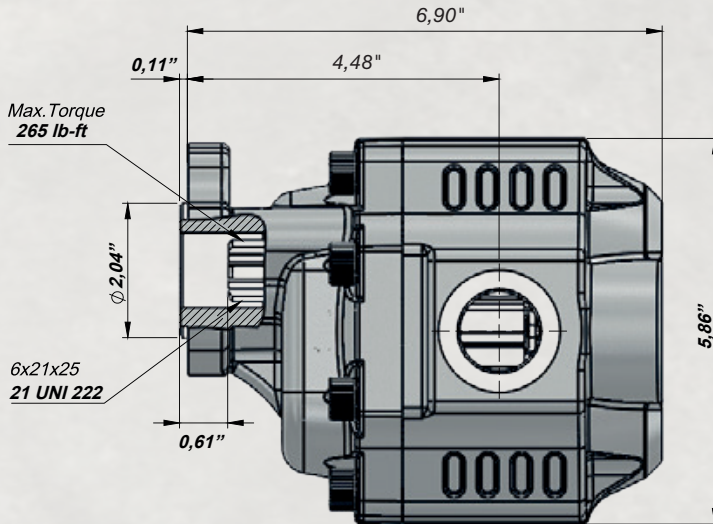


Inlet Pressure	4.35 ÷ 29 PSI		
Operating Viscosity Range	-12:100 cSt		
Fluid Temperature	-40 °F +293 °F		
Working Pressure	Contamination		Filter βx=75
	NAS 1638	ISO 4406	
≥2900 PSI	11	20/17	25 μm
≤2900 PSI	12	21/18	40 μm

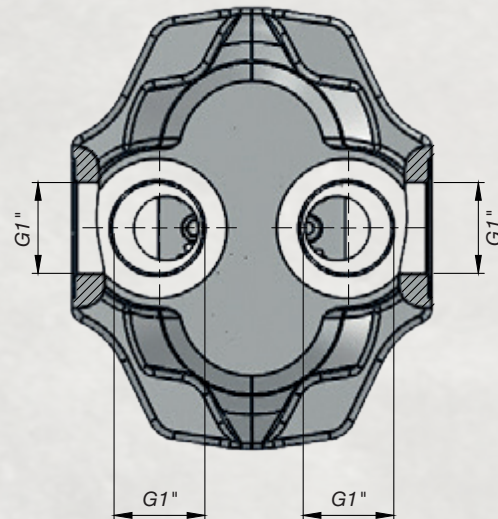
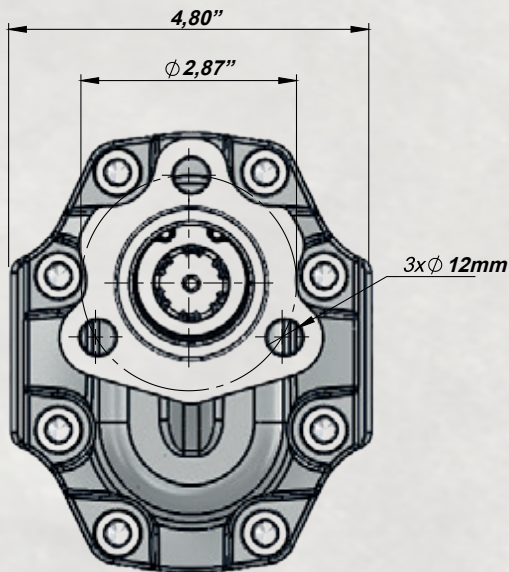


Code BD	Displacement (GPM)	Max. Continuous Pressure (%100)(PSI)	Min. Speed (RPM)	Max. Speed (RPM)
KH01020430222B-2	11	3625	300	1800

13,5 GPM Hydraulic Gear Pump

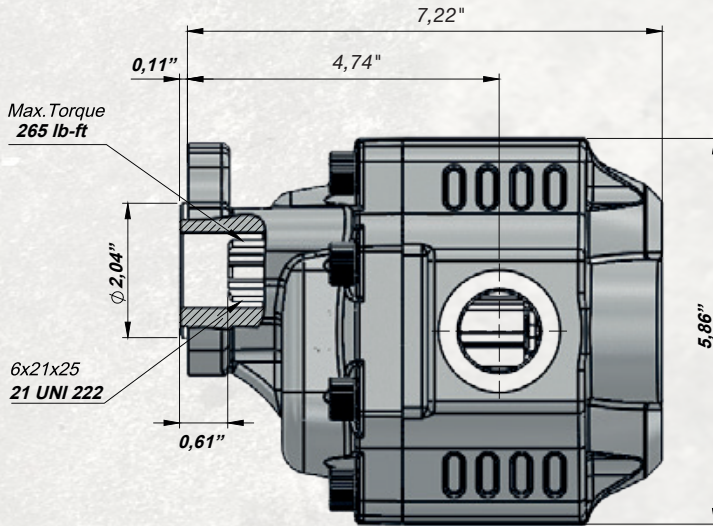


Inlet Pressure	4.35 ÷ 29 PSI		
Operating Viscosity Range	-12:100 cSt		
Fluid Temperature	-40 °F +293 °F		
Working Pressure	Contamination		Filter βx=75
	NAS 1638	ISO 4406	
≥2900 PSI	11	20/17	25 μm
≤2900 PSI	12	21/18	40 μm

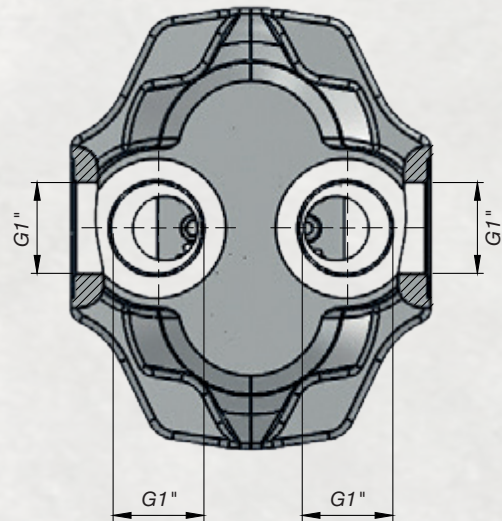
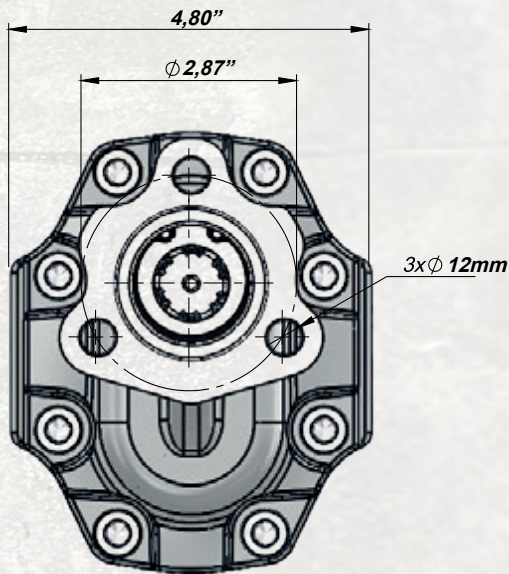


Code BD	Displacement (GPM)	Max. Continuous Pressure (%100)(PSI)	Min. Speed (RPM)	Max. Speed (RPM)
KH01020510222B-2	13,5	2900	300	1800

16 GPM Hydraulic Gear Pump

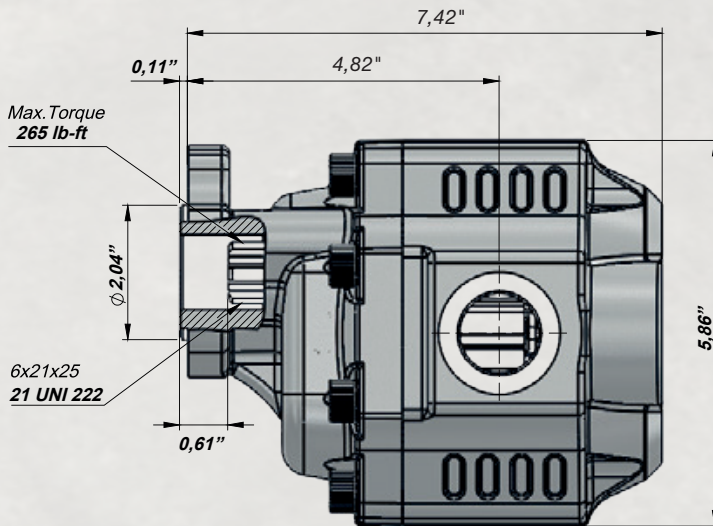


Inlet Pressure	4.35 ÷ 29 PSI		
Operating Viscosity Range	-12:100 cSt		
Fluid Temperature	-40 °F +293 °F		
Working Pressure	Contamination		Filter βx=75
	NAS 1638	ISO 4406	
≥2900 PSI	11	20/17	25 μm
≤2900 PSI	12	21/18	40 μm

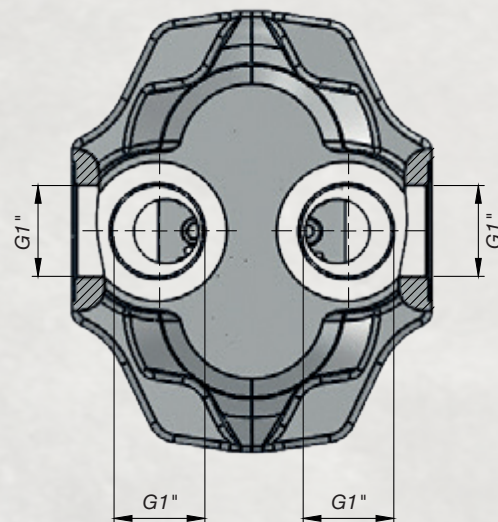
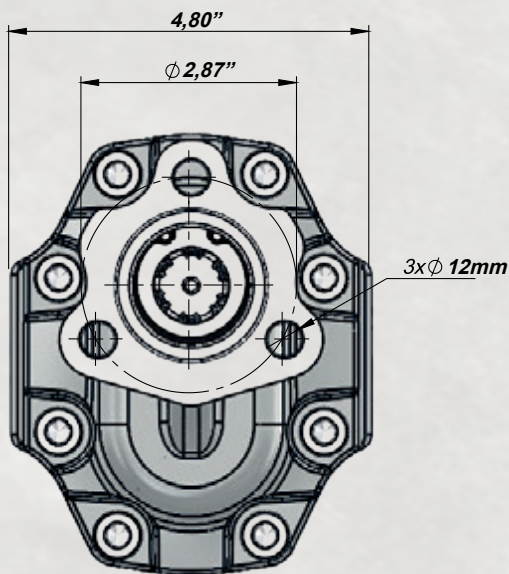


Code BD	Displacement (GPM)	Max. Continuous Pressure (%100)(PSI)	Min. Speed (RPM)	Max. Speed (RPM)
KH01020610222B-2	16	2828	300	1600

19 GPM Hydraulic Gear Pump

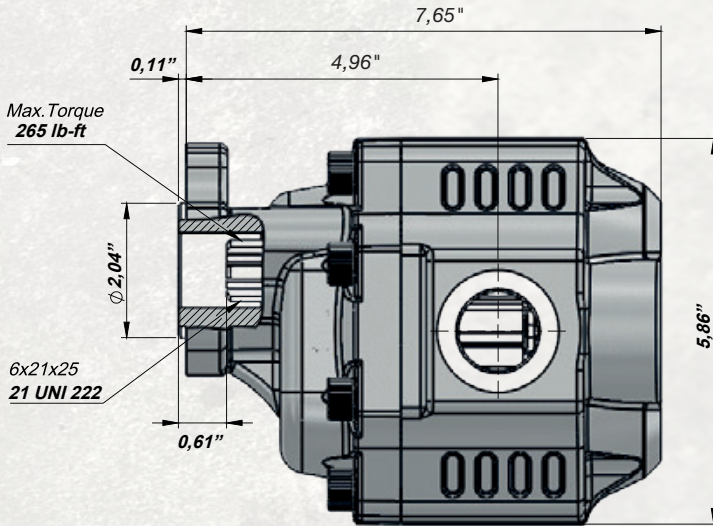


Inlet Pressure	4.35 ÷ 29 PSI		
Operating Viscosity Range	-12:100 cSt		
Fluid Temperature	-40 °F +293 °F		
Working Pressure	Contamination		Filter $\beta_x=75$
	NAS 1638	ISO 4406	
≥ 2900 PSI	11	20/17	25 μm
≤ 2900 PSI	12	21/18	40 μm

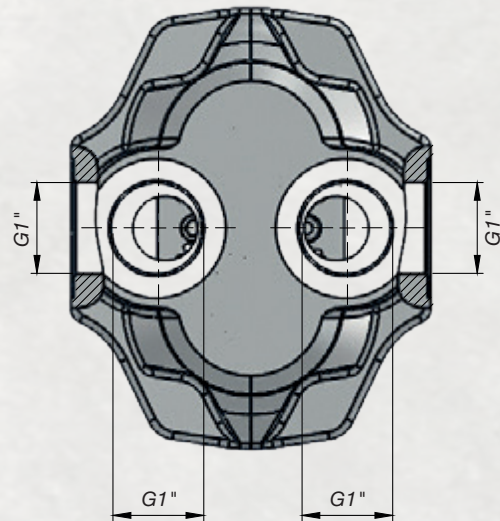
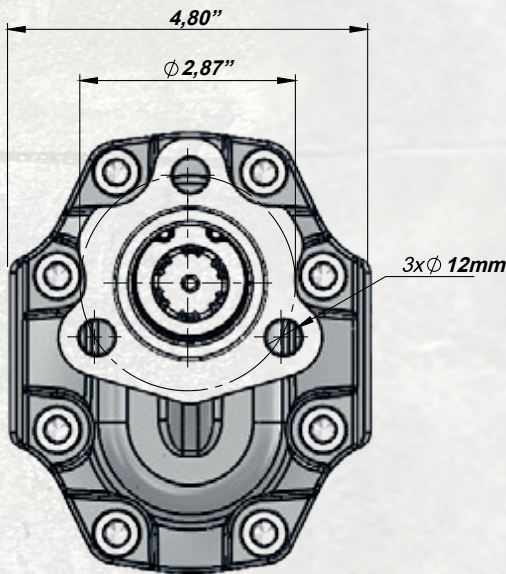


Code BD	Displacement (GPM)	Max. Continuous Pressure (%100)(PSI)	Min. Speed (RPM)	Max. Speed (RPM)
KH01020730222B-2	19	2755	300	1600

21,5 GPM Hydraulic Gear Pump



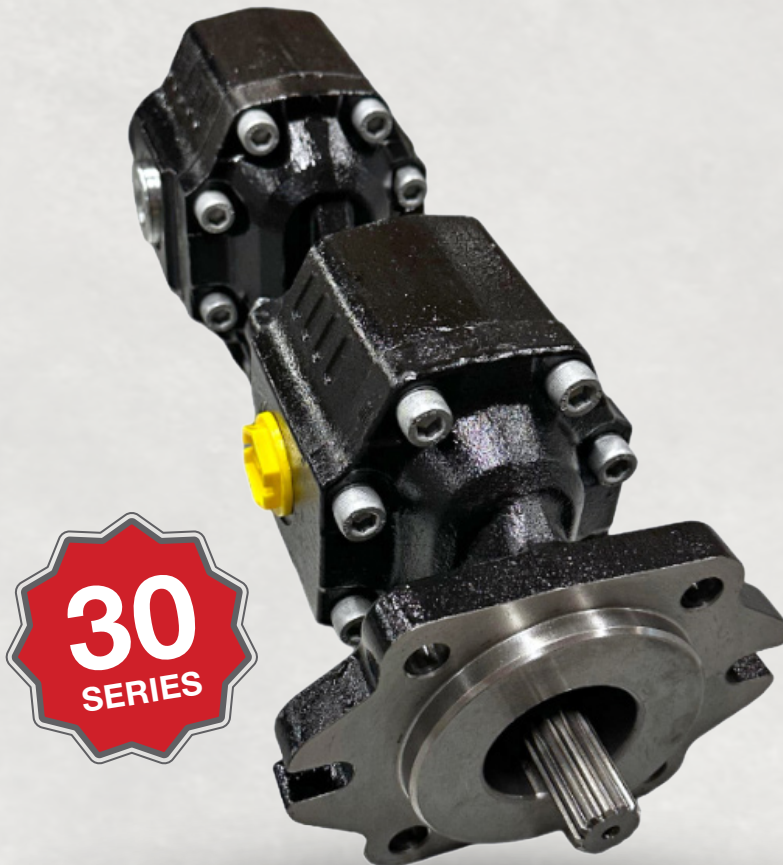
Inlet Pressure	4.35 ÷ 29 PSI		
Operating Viscosity Range	-12:100 cSt		
Fluid Temperature	-40 °F +293 °F		
Working Pressure	Contamination		Filter βx=75
	NAS 1638	ISO 4406	
≥2900 PSI	11	20/17	25 μm
≤2900 PSI	12	21/18	40 μm









Code BD	Displacement (GPM)	Max. Continuous Pressure (%100)(PSI)	Min. Speed (RPM)	Max. Speed (RPM)
KH01020820222B-2	21,5	2610	300	1500



HYDRAULIC GEAR TANDEM PUMP



2+4 HOLES SAE-B 13T BI-DIRECTIONAL
TANDEM GEAR PUMP

 www.toracompany.com
 www.kmspowertakeoff.com
 info@toracompany.com
 11417 IL 19, Franklin Park, IL 60131
 (630) 785-2410
 (331) 688-4947



[toracompany](https://www.facebook.com/toracompany)



[tora.company](https://www.instagram.com/tora.company)



www.toracompany.com

